



# LABOUR FORCE

NEW SOUTH WALES AND  
AUSTRALIAN CAPITAL TERRITORY

EMBARGO: 11:30AM (CANBERRA TIME) FRI 28 APR 2000

## CONTENTS

	<i>page</i>
Notes .....	2
 SUMMARY OF FINDINGS	
New South Wales .....	3
Australian Capital Territory .....	8
 LIST OF TABLES AND GRAPHS	
New South Wales .....	11
Australian Capital Territory .....	12
 INFORMATION	
Explanatory notes .....	46
Appendix:	
Supplementary topics .....	51
Regions of NSW and ACT .....	52
Regions of NSW and ACT—maps .....	57
Technical note: data reliability .....	58
Standard errors .....	61

- For further information about these and related statistics, contact Kevin Fagan on Sydney 02 9268 4315 or the National Information Service on 1300 135 070.

## NOTES

**FORTHCOMING ISSUES**                      *ISSUE (Quarter)*                      *EXPECTED RELEASE DATE*

	May 2000	28 July 2000
	August 2000	27 October 2000

**ABOUT THIS PUBLICATION**

This publication contains estimates of the civilian labour force in New South Wales (NSW) and the Australian Capital Territory (ACT) derived from the Labour Force Survey (LFS) component of the Monthly Population Survey, which is conducted on a sample basis throughout Australia. Explanatory notes for data contained in this publication can be found on page 46. Care should be taken in the interpretation of month-to-month movements in the estimates. Survey estimates are subject to sampling and non-sampling variability as explained in the Technical note on data reliability on page 58.

**SYMBOLS AND OTHER USAGES**

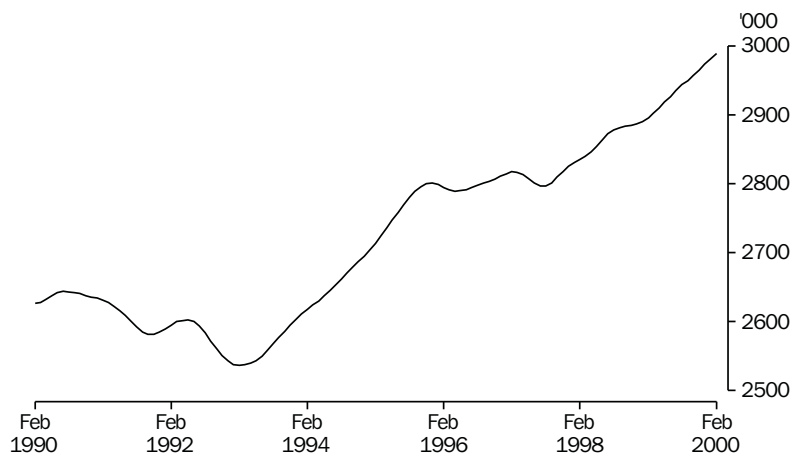
A	Area
C	City
MSR	Major Statistical Region
n.e.c.	Not elsewhere classified
SD	Statistical Division
SR	Statistical Region
SRS	Statistical Region Sector
*	Subject to sampling variability too high for most practical purposes. See the Technical note on data reliability.
. .	Not applicable
—	Nil or rounded to zero (including null cells)

Gregory W. Bray  
Regional Director  
New South Wales

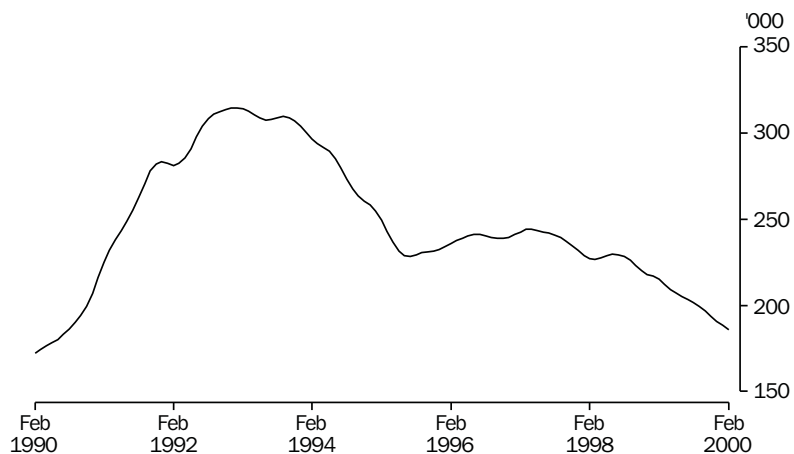
## SUMMARY OF FINDINGS—NEW SOUTH WALES

### TREND ESTIMATES

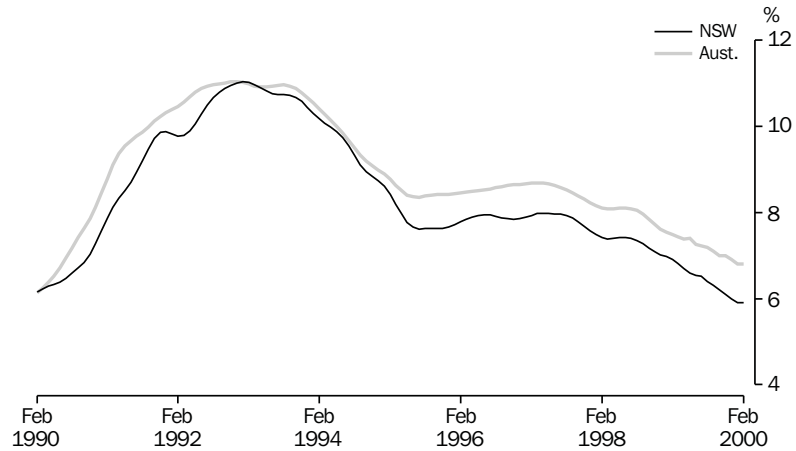
**Employed persons** The trend estimate of employed persons has risen steadily since July 1997. It reached 2,989,500 in February 2000.



**Unemployed persons** The trend estimate of unemployed persons in NSW peaked at 244,000 in April 1997. Since then it has fallen steadily and reached 185,900 in February 2000.



Unemployment rate The trend unemployment rate in NSW reached a high of 8.1% in April 1997. Since then it has fallen steadily to reach 5.9% in February 2000.



Participation rate and labour force The trend estimate of the participation rate in NSW rose from 61.5% at the beginning of 1998 to 62.0% in July and August 1998. It then dropped to 61.6% in the period December 1998 to March 1999 but has risen since then and reached 62.0% in February 2000.

The trend estimated labour force in NSW remained fairly steady over the period from August 1998 to January 1999. However, it has risen gradually since then to reach 3,175,300 in February 2000.

SEASONALLY ADJUSTED ESTIMATES

The seasonally adjusted estimate of employment in NSW rose steadily throughout 1999 and into 2000, reaching 3,004,500 in February 2000. The seasonally adjusted estimate of the number of unemployed fluctuated throughout 1999, before falling to reach 186,400 in February 2000. The seasonally adjusted estimate of the unemployment rate also fluctuated throughout 1999 before dropping from 6.3% in December 1999 to 5.8% in February 2000.

REGIONS OF NSW

While the Labour Force Survey (LFS) is designed primarily to produce reliable estimates at the national and State/Territory level, it also delivers estimates for a number of regions within States. As with national and State estimates, regional labour force estimates are subject to sampling error. Since estimates for regions are components of corresponding estimates at the State level—and are thus based on a considerably smaller sample size—they are subject to higher relative standard errors. Care should therefore be taken in interpretation of regional estimates, particularly month-to-month movements.

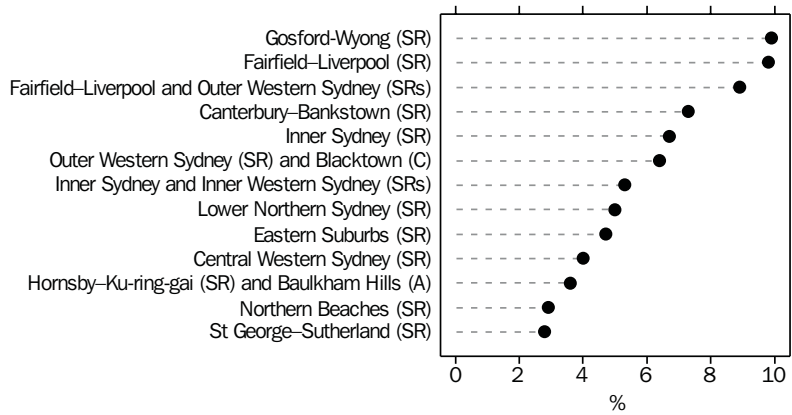
Sydney There were 1,968,400 employed people in the Sydney Major Statistical Region (MSR) in February 2000, a rise of 61,100 over the year from February 1999. The unemployment rate fell from 6.1% in February 1999 to 5.6% in February 2000.

Regional unemployment rates within the Sydney MSR in February 2000 ranged from 2.8% in St George-Sutherland Statistical Region (SR) to 9.9% in Gosford-Wyong SR. Participation rates varied from 50.9% in Gosford-Wyong SR to 69.1% in Inner Sydney SR.

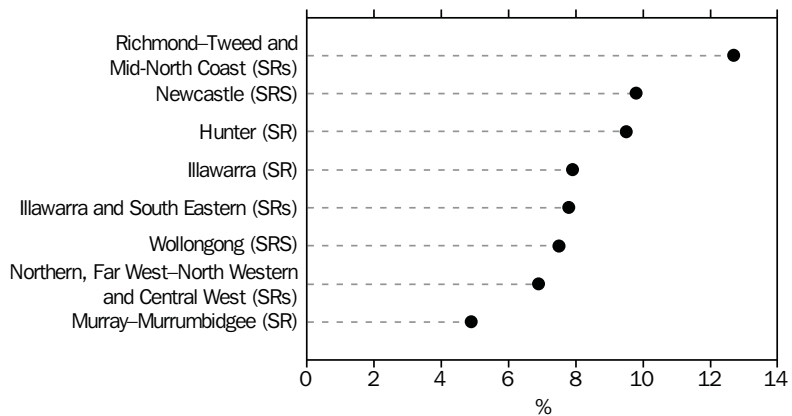
Balance of NSW There were 1,007,900 employed people in Balance of NSW MSR in February 2000, 33,900 more than in February 1999. The unemployment rate in February 2000 was 8.7%, almost two percentage points down on the figure recorded in February 1999.

Unemployment rates ranged from 4.9% in Murray-Murrumbidgee SRs to 12.7% in Richmond-Tweed and Mid-North Coast SRs. Participation rates varied from 55.9% in the Illawarra SR to 63.3% in Murray-Murrumbidgee SRs.

UNEMPLOYMENT RATE, SYDNEY MSR, FEBRUARY 2000



UNEMPLOYMENT RATE, BALANCE OF NSW MSR, FEBRUARY 2000



INDUSTRY AND OCCUPATION

The industry in NSW with the highest gain in employment in the year to February 2000 was Construction with a rise of 31,7000 or 14.9% while the largest fall occurred in the Education sector (24,800 or 12.0%).

The industries with the highest employment in February 2000 were Retail trade with 432,300 (14.5% of total employed) and Manufacturing with 351,500 (11.8% of total).

The major occupation group with the largest annual gain in employment in the year to February 2000 was Associate professionals with an increase of 40,900 (14.8%) while the largest percentage fall was in the Advanced clerical, sales and service group (5,100 or 3.8%).

AGE

The unemployment rate at February 2000 decreased with age from 17.8% for 15–19 year olds to 3.5% for the 45–54 years age group. The rate for the 55–59 years age group was 3.9%, although the unemployment rate for 55 and over was 3.4%.

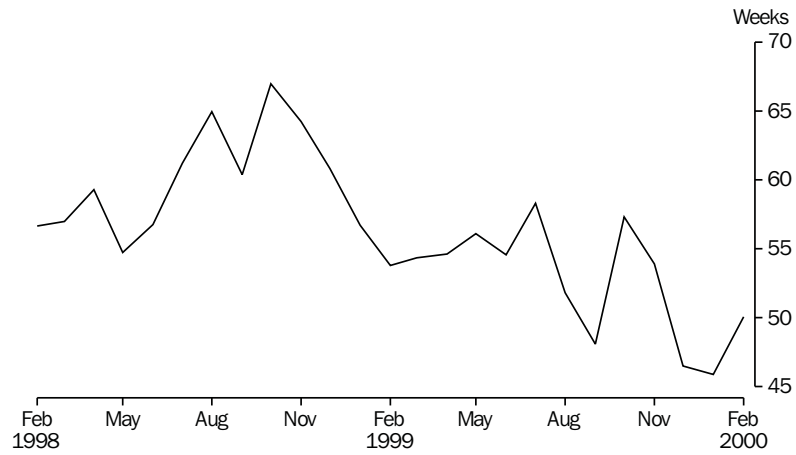
BIRTHPLACE

In February 2000, the unemployment rate for Australian-born people in NSW was 6.9% compared to 5.4% for those born overseas in the main English-speaking countries and 6.2% for those born in other countries.

DURATION OF UNEMPLOYMENT

In February 2000, the average (mean) duration of unemployment was 50.1 weeks and the median duration of unemployment was 12 weeks. Approximately one fifth of all unemployed persons had been unemployed for two years or more.

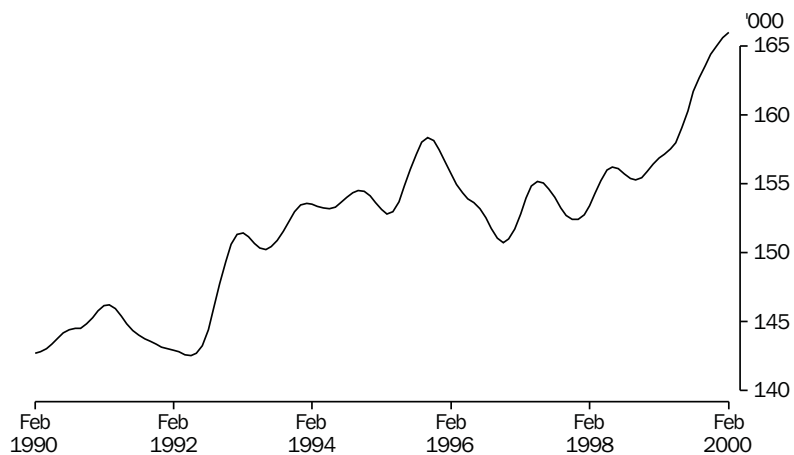
Average duration of unemployment



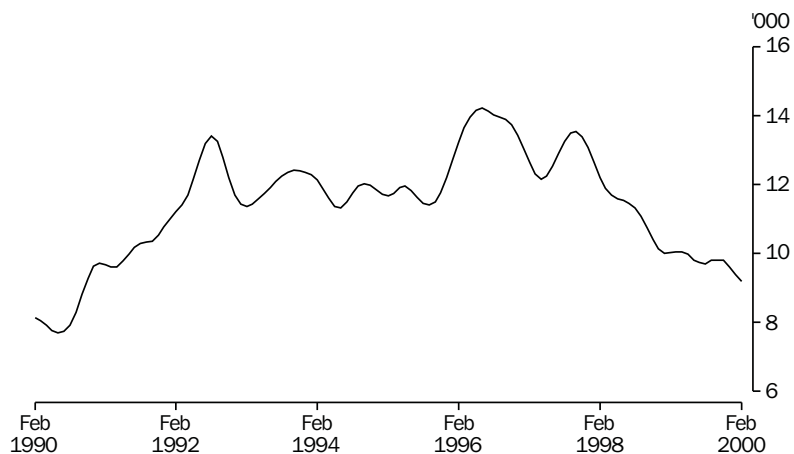
## SUMMARY OF FINDINGS—AUSTRALIAN CAPITAL TERRITORY

### TREND ESTIMATES

**Employed persons** The trend estimate of employed persons in the ACT has been rising steadily since October 1998 and in February 2000 was 166,000.

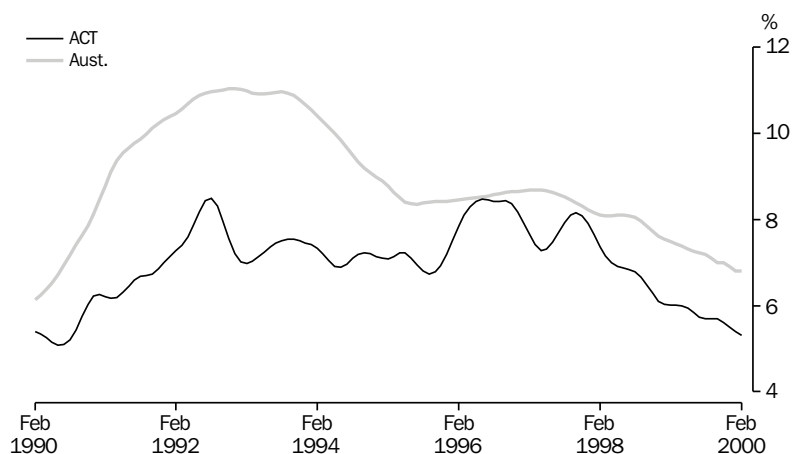


**Unemployed persons** Since peaking at 13,500 in October 1997, the trend estimate of unemployment in the ACT has been moving downwards. It reached 9,200 in February 2000.





Unemployment rate    The trend unemployment rate in the ACT fell steadily throughout 1999 and reached 5.3% in February 2000.



Participation rate and labour force    The ACT trend participation rate rose gradually throughout 1999 and reached 73.3% in February 2000. The trend labour force estimate was 175,200 in February 2000.

#### INDUSTRY AND OCCUPATION

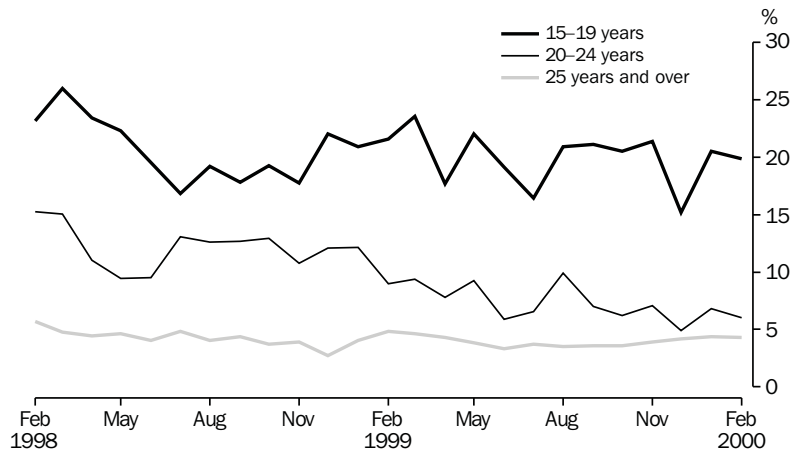
There was an average of 38,700 people employed in Government administration and defence in the ACT for the year ending February 2000, an increase of 1,200 on the average for the previous year. This industry sector accounted for almost a quarter of total employment in February 2000. Retail trade accounted for a further 14.7% of total employment and Property and business services 13.6%.

For the year ending February 2000, the largest occupation group in the ACT was Professionals. This group had an average of 42,000 employed persons over the year, constituting 25.9% of the total number of employed persons.

#### AGE

In February 2000, the proportion of employed people working part-time in the ACT ranged from 68.6% of 15–19 year olds to 19.3% of those aged 25 years and over. The unemployment rates for these groups was 19.9% and 4.3%, respectively.

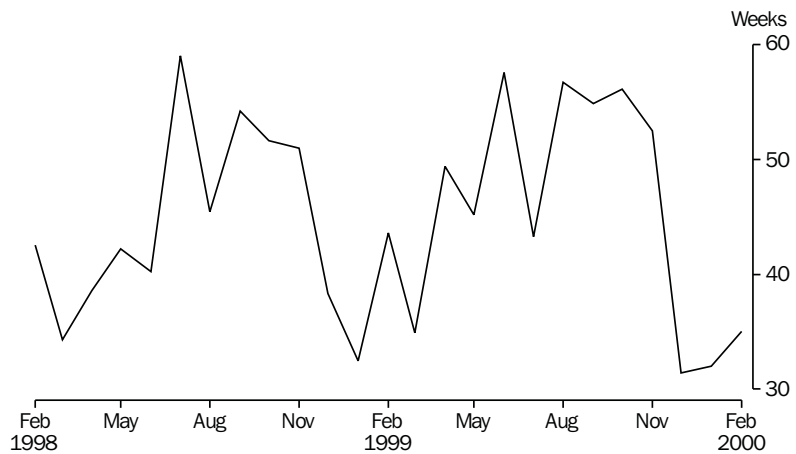
Unemployment rate by age



DURATION OF UNEMPLOYMENT

The average duration of unemployment in the ACT in February 2000 was 35 weeks. The average has ranged between 31 and 57 weeks over the past year.

Average duration of unemployment



## LIST OF TABLES AND GRAPHS

NEW SOUTH WALES		Page
Tables	Labour force status:	
	<b>1</b> Original series	13
	<b>2</b> Seasonally adjusted and trend series	14
	<b>3</b> Age, February 2000	16
	<b>4</b> Persons aged 15–24 by full-time educational attendance, February 2000	17
	<b>5</b> Family status, February 2000	18
Graphs	Labour force status:	
	Trend series, February 1990–February 2000:	
	Employed males	15
	Employed females	15
	Unemployed males	15
	Unemployed females	15
	Male unemployment rate	15
	Female unemployment rate	15
	Male participation rate	15
	Female participation rate	15
Tables	Employed persons:	
	<b>6</b> Status in employment	18
	<b>7</b> Age	19
	<b>8</b> Industry, February 1999 and February 2000	20
	<b>9</b> Occupation, February 1999 and February 2000	22
Graphs	Employed persons:	
	Annual change in employment by age, February 1999–February 2000	19
	Annual change in employment by industry division, February 1999–February 2000	21
	Annual change in employment by occupation group, February 1999–February 2000	23
Tables	Unemployed persons:	
	<b>10</b> Age	24
	<b>11</b> Unemployment rate by age	24
	<b>12</b> Industry and occupation of last full-time job, February 2000	25
	<b>13</b> Duration of unemployment	26
	<b>14</b> Unemployment rate by birthplace and period of arrival	26
	<b>15</b> Duration of unemployment by age	27
Graphs	Unemployment rate:	
	Unemployment rate by age, February 1998–February 2000	25
	Unemployment rate by period of arrival of overseas born, February 2000	26

Tables	Regional data:	
	Labour force status	
	<b>16</b> Sydney Major Statistical Region	28
	<b>17</b> Balance of NSW Major Statistical Region	29
	Employed persons:	
	<b>18</b> Industry and occupation, Sydney Major Statistical Region and Balance of NSW Major Statistical Region, February 2000	30
	<b>19</b> Labour force status of regions of NSW and ACT	31
AUSTRALIAN CAPITAL TERRITORY		
Tables	Labour force status:	
	<b>20</b> Original series	39
	<b>21</b> Trend series	40
	<b>22</b> Age, February 2000	42
	<b>23</b> Non-institutionalised persons, birthplace and year of arrival, February 2000	42
Graphs	Labour force status:	
	Trend series, February 1990–February 2000	
	Employed males	41
	Employed females	41
	Unemployed males	41
	Unemployed females	41
	Male unemployment rate	41
	Female unemployment rate	41
	Male participation rate	41
	Female participation rate	41
Tables	Employed persons:	
	<b>24</b> Industry, average for year ending February 1999 and February 2000	43
	<b>25</b> Occupation, average for year ending February 1999 and February 2000	44
	Unemployed persons:	
	<b>26</b> Long-term unemployment	45
Graphs	Employed persons:	
	Average employment by industry division, year ending February 1999 and February 2000	43
	Average employment by occupation group, year ending February 1999 and February 2000	44
	Unemployed persons:	
	Long-term unemployed as a proportion of total unemployed, September 1998–February 2000	45

**TABLE 1. LABOUR FORCE STATUS: ORIGINAL SERIES, NSW**

Month	Employed			Unemployed			Labour force ('000)	Not in labour force ('000)	Civilian population aged 15 and over ('000)	Unemployment rate (per cent)	Participation rate (per cent)
	Full-time workers ('000)	Part-time workers ('000)	Total ('000)	Looking for full-time work ('000)	Looking for part-time work ('000)	Total ('000)					
<b>MALES</b>											
February—											
1996	1,422.6	167.0	1,589.7	132.7	17.1	149.8	1,739.4	640.7	2,380.1	8.6	73.1
1997	1,419.5	168.7	1,588.2	141.2	18.8	160.0	1,748.2	664.8	2,413.0	9.2	72.4
1998	1,432.9	167.4	1,600.3	127.7	21.6	149.3	1,749.6	696.4	2,446.1	8.5	71.5
1998—											
December	1,467.6	190.8	1,658.3	107.6	13.9	121.5	1,779.8	695.0	2,474.7	6.8	71.9
1999—											
January	1,447.1	185.8	1,633.0	124.6	16.2	140.8	1,773.8	703.8	2,477.5	7.9	71.6
February	1,453.4	191.5	1,644.9	113.5	19.6	133.1	1,778.0	702.4	2,480.3	7.5	71.7
November	1,498.9	182.9	1,681.8	81.4	13.7	95.1	1,777.0	733.5	2,510.5	5.4	70.8
December	1,530.2	180.8	1,711.0	95.2	20.9	116.1	1,827.0	687.5	2,514.5	6.4	72.7
2000—											
January	1,497.6	182.6	1,680.2	104.8	15.1	119.9	1,800.1	717.6	2,517.7	6.7	71.5
February	1,503.6	190.4	1,694.0	95.8	18.0	113.8	1,807.8	713.1	2,520.9	6.3	71.7
<b>MARRIED FEMALES</b>											
February—											
1996	401.2	305.1	706.4	31.9	12.9	44.7	751.1	667.5	1,418.6	6.0	52.9
1997	396.2	298.8	695.1	26.4	17.0	43.3	738.4	652.5	1,391.0	5.9	53.1
1998	398.1	319.0	717.2	30.6	15.1	45.7	762.9	696.3	1,459.2	6.0	52.3
1998—											
December	430.5	322.9	753.4	22.0	10.2	32.2	785.6	667.6	1,453.2	4.1	54.1
1999—											
January	404.4	304.3	708.7	22.1	6.3	28.4	737.2	707.1	1,444.3	3.9	51.0
February	408.4	317.7	726.1	24.3	14.4	38.7	764.8	681.0	1,445.8	5.1	52.9
November	430.2	341.2	771.4	16.5	8.3	24.8	796.1	673.9	1,470.1	3.1	54.2
December	454.4	326.7	781.1	14.4	11.0	25.4	806.5	672.1	1,478.5	3.1	54.5
2000—											
January	440.8	300.5	741.2	16.9	8.5	25.4	766.7	710.5	1,477.2	3.3	51.9
February	441.6	338.7	780.3	21.7	14.2	35.9	816.2	672.5	1,488.8	4.4	54.8
<b>ALL FEMALES</b>											
February—											
1996	721.1	466.4	1,187.4	77.0	32.8	109.8	1,297.2	1,172.5	2,469.7	8.5	52.5
1997	727.8	468.3	1,196.2	79.4	45.5	125.0	1,321.1	1,183.4	2,504.6	9.5	52.7
1998	709.5	482.9	1,192.3	71.2	39.6	110.8	1,303.2	1,232.7	2,535.9	8.5	51.4
1998—											
December	762.7	514.0	1,276.6	57.4	29.3	86.6	1,363.3	1,199.2	2,562.5	6.4	53.2
1999—											
January	739.5	478.4	1,218.0	62.6	27.5	90.1	1,308.0	1,257.1	2,565.1	6.9	51.0
February	738.4	498.0	1,236.4	67.4	37.1	104.5	1,340.9	1,226.8	2,567.7	7.8	52.2
November	756.5	526.8	1,283.3	50.5	21.3	71.8	1,355.1	1,239.7	2,594.8	5.3	52.2
December	788.4	518.5	1,307.0	54.7	26.2	80.9	1,387.9	1,210.4	2,598.3	5.8	53.4
2000—											
January	776.9	480.3	1,257.2	55.3	25.4	80.7	1,337.9	1,262.8	2,600.7	6.0	51.4
February	755.7	526.6	1,282.3	57.0	41.2	98.2	1,380.5	1,222.7	2,603.2	7.1	53.0
<b>PERSONS</b>											
February—											
1996	2,143.7	633.4	2,777.1	209.7	49.9	259.6	3,036.7	1,813.2	4,849.8	8.5	62.6
1997	2,147.3	637.1	2,784.4	220.6	64.3	284.9	3,069.3	1,848.3	4,917.6	9.3	62.4
1998	2,142.4	650.3	2,792.7	198.9	61.2	260.1	3,052.8	1,929.1	4,981.9	8.5	61.3
1998—											
December	2,230.2	704.7	2,934.9	165.0	43.2	208.1	3,143.1	1,894.2	5,037.2	6.6	62.4
1999—											
January	2,186.6	664.3	2,850.9	187.1	43.7	230.9	3,081.8	1,960.9	5,042.6	7.5	61.1
February	2,191.8	689.5	2,881.3	180.9	56.7	237.5	3,118.8	1,929.2	5,048.0	7.6	61.8
November	2,255.4	709.7	2,965.1	131.9	35.0	167.0	3,132.1	1,973.2	5,105.3	5.3	61.4
December	2,318.6	699.3	3,017.9	149.9	47.1	197.0	3,214.9	1,897.9	5,112.8	6.1	62.9
2000—											
January	2,274.5	662.9	2,937.4	160.1	40.5	200.6	3,138.0	1,980.4	5,118.4	6.4	61.3
February	2,259.3	717.0	2,976.3	152.8	59.2	212.0	3,188.3	1,935.7	5,124.0	6.6	62.2

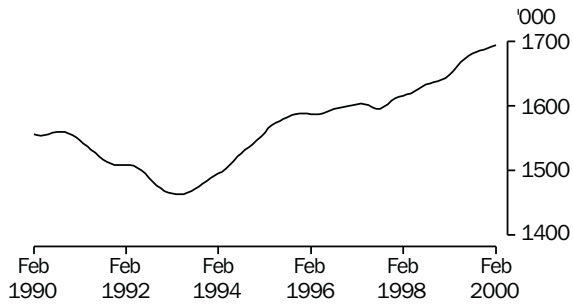
TABLE 2. LABOUR FORCE STATUS: SEASONALLY ADJUSTED AND TREND SERIES, NSW

Month	Seasonally adjusted series					Trend series (a)				
	Employed ('000)	Unemp-loyed ('000)	Labour force ('000)	Unemp-loyment rate (per cent)	Partici-pation rate (per cent)	Employed ('000)	Unemp-loyed ('000)	Labour force ('000)	Unemp-loyment rate (per cent)	Partici-pation rate (per cent)
MALES										
February—										
1996	1,593.1	137.6	1,730.7	7.9	72.7	1,588.1	141.6	1,729.7	8.2	72.7
1997	1,592.6	146.5	1,739.2	8.4	72.1	1,604.3	141.5	1,745.8	8.1	72.3
1998	1,606.0	136.2	1,742.2	7.8	71.2	1,617.4	132.5	1,749.9	7.6	71.5
1998—										
December	1,636.4	123.6	1,759.9	7.0	71.1	1,641.8	125.6	1,767.3	7.1	71.4
1999—										
January	1,638.9	130.7	1,769.6	7.4	71.4	1,645.2	124.8	1,770.0	7.1	71.4
February	1,651.9	121.0	1,772.9	6.8	71.5	1,649.5	123.2	1,772.7	6.9	71.5
March	1,661.9	121.2	1,783.1	6.8	71.8	1,654.8	120.4	1,775.2	6.8	71.5
April	1,656.9	118.1	1,775.0	6.7	71.4	1,661.1	117.2	1,778.3	6.6	71.5
May	1,666.8	113.2	1,780.0	6.4	71.5	1,667.1	115.0	1,782.2	6.5	71.6
June	1,670.6	112.2	1,782.8	6.3	71.5	1,672.4	113.9	1,786.3	6.4	71.7
July	1,681.1	109.6	1,790.8	6.1	71.7	1,677.0	113.3	1,790.3	6.3	71.7
August	1,678.8	115.2	1,794.0	6.4	71.8	1,680.9	113.0	1,793.8	6.3	71.8
September	1,684.6	121.7	1,806.3	6.7	72.2	1,683.8	112.5	1,796.3	6.3	71.8
October	1,689.0	110.2	1,799.3	6.1	71.8	1,685.8	111.7	1,797.6	6.2	71.7
November	1,686.4	97.0	1,783.4	5.4	71.0	1,687.6	110.6	1,798.2	6.1	71.6
December	1,688.3	118.2	1,806.6	6.5	71.8	1,689.7	109.3	1,799.0	6.1	71.6
2000—										
January	1,685.9	111.5	1,797.5	6.2	71.4	1,691.8	108.2	1,800.0	6.0	71.5
February	1,701.9	103.3	1,805.2	5.7	71.6	1,694.1	107.0	1,801.1	5.9	71.5
FEMALES										
February—										
1996	1,204.9	92.9	1,297.8	7.2	52.5	1,208.0	94.4	1,302.4	7.2	52.7
1997	1,214.3	105.7	1,320.1	8.0	52.7	1,214.3	101.5	1,315.8	7.7	52.5
1998	1,211.0	93.7	1,304.7	7.2	51.5	1,219.2	95.1	1,314.3	7.2	51.8
1998—										
December	1,253.9	87.5	1,341.5	6.5	52.4	1,245.9	93.4	1,339.3	7.0	52.3
1999—										
January	1,247.9	86.9	1,334.8	6.5	52.0	1,246.6	92.7	1,339.3	6.9	52.2
February	1,255.9	88.4	1,344.2	6.6	52.4	1,247.7	92.2	1,340.0	6.9	52.2
March	1,242.3	98.4	1,340.6	7.3	52.2	1,249.0	91.7	1,340.7	6.8	52.2
April	1,246.3	94.7	1,341.0	7.1	52.1	1,250.1	91.5	1,341.6	6.8	52.1
May	1,253.7	90.7	1,344.3	6.7	52.2	1,251.3	91.5	1,342.7	6.8	52.1
June	1,256.2	89.4	1,345.6	6.6	52.2	1,253.4	91.0	1,344.5	6.8	52.1
July	1,257.1	82.4	1,339.5	6.2	51.9	1,257.1	89.9	1,347.0	6.7	52.2
August	1,257.3	93.1	1,350.4	6.9	52.2	1,261.2	88.5	1,349.7	6.6	52.2
September	1,264.4	96.1	1,360.5	7.1	52.6	1,266.1	86.9	1,353.0	6.4	52.3
October	1,277.9	79.8	1,357.7	5.9	52.4	1,271.5	85.1	1,356.6	6.3	52.3
November	1,274.1	79.9	1,354.0	5.9	52.2	1,277.8	83.1	1,360.8	6.1	52.4
December	1,283.2	81.7	1,364.9	6.0	52.5	1,284.1	81.3	1,365.4	6.0	52.6
2000—										
January	1,288.0	78.0	1,366.0	5.7	52.5	1,290.1	80.1	1,370.2	5.8	52.7
February	1,302.6	83.1	1,385.7	6.0	53.2	1,295.4	78.8	1,374.2	5.7	52.8
PERSONS										
February—										
1996	2,798.0	230.5	3,028.5	7.6	62.4	2,796.1	236.0	3,032.1	7.8	62.5
1997	2,807.0	252.3	3,059.2	8.2	62.2	2,818.6	243.0	3,061.5	7.9	62.3
1998	2,817.0	229.9	3,046.9	7.5	61.2	2,836.6	227.6	3,064.2	7.4	61.5
1998—										
December	2,890.3	211.1	3,101.4	6.8	61.6	2,887.6	218.9	3,106.6	7.0	61.7
1999—										
January	2,886.8	217.6	3,104.4	7.0	61.6	2,891.8	217.5	3,109.3	7.0	61.7
February	2,907.8	209.3	3,117.2	6.7	61.8	2,897.2	215.4	3,112.6	6.9	61.7
March	2,904.2	219.6	3,123.8	7.0	61.8	2,903.8	212.1	3,115.9	6.8	61.7
April	2,903.2	212.7	3,116.0	6.8	61.6	2,911.2	208.7	3,119.9	6.7	61.7
May	2,920.5	203.8	3,124.3	6.5	61.7	2,918.4	206.5	3,124.9	6.6	61.7
June	2,926.9	201.6	3,128.4	6.4	61.7	2,925.8	205.0	3,130.8	6.5	61.7
July	2,938.2	192.1	3,130.3	6.1	61.6	2,934.1	203.2	3,137.3	6.5	61.8
August	2,936.1	208.2	3,144.3	6.6	61.8	2,942.1	201.4	3,143.6	6.4	61.8
September	2,948.9	217.8	3,166.7	6.9	62.2	2,949.9	199.4	3,149.3	6.3	61.9
October	2,967.0	190.0	3,157.0	6.0	61.9	2,957.4	196.8	3,154.2	6.2	61.9
November	2,960.5	176.9	3,137.4	5.6	61.5	2,965.4	193.7	3,159.1	6.1	61.9
December	2,971.5	199.9	3,171.5	6.3	62.0	2,973.8	190.6	3,164.4	6.0	61.9
2000—										
January	2,974.0	189.5	3,163.4	6.0	61.8	2,981.9	188.3	3,170.2	5.9	61.9
February	3,004.5	186.4	3,190.8	5.8	62.3	2,989.5	185.9	3,175.3	5.9	62.0

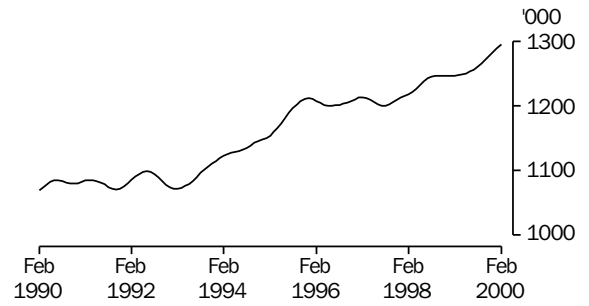
(a) See Explanatory Notes 29 and 30.

TREND SERIES, NSW(a)

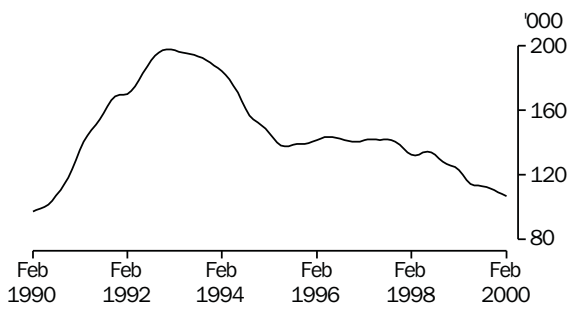
EMPLOYED MALES



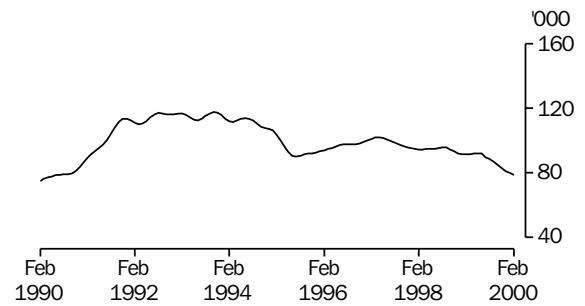
EMPLOYED FEMALES



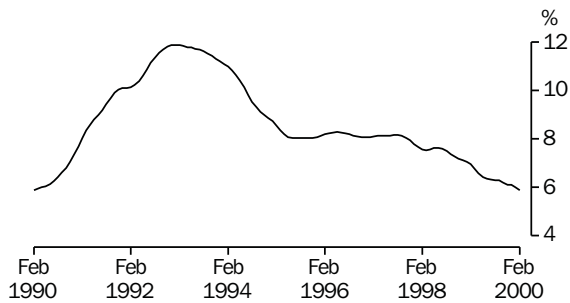
UNEMPLOYED MALES



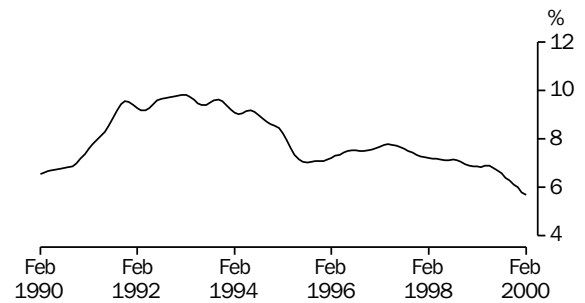
UNEMPLOYED FEMALES



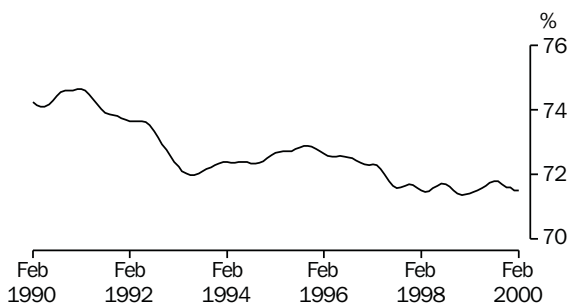
MALE UNEMPLOYMENT RATE



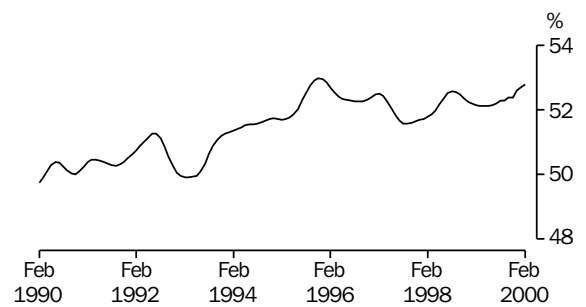
FEMALE UNEMPLOYMENT RATE



MALE PARTICIPATION RATE



FEMALE PARTICIPATION RATE



(a) Comparisons between these graphs should not be made, as their vertical axes are not similarly scaled.

**TABLE 3. LABOUR FORCE STATUS: AGE, NSW, FEBRUARY 2000**

Age group (years)	Employed			Unemployed			Labour force ( <i>'000</i> )	Not in labour force ( <i>'000</i> )	Civilian population aged 15 and over ( <i>'000</i> )	Unemp- loyment rate (per cent)	Partici- pation rate (per cent)
	Full-time workers ( <i>'000</i> )	Part-time workers ( <i>'000</i> )	Total ( <i>'000</i> )	Looking for full- time work ( <i>'000</i> )	Looking for part- time work ( <i>'000</i> )	Total ( <i>'000</i> )					
<b>MALES</b>											
15-19	55.3	53.3	108.6	15.0	9.2	24.2	132.8	94.7	227.4	18.2	58.4
20-24	148.1	27.0	175.1	18.3	* 4.3	22.6	197.7	27.1	224.8	11.4	88.0
25-34	390.0	28.8	418.8	24.0	* 0.4	24.5	443.3	38.3	481.6	5.5	92.0
35-44	407.5	23.6	431.1	21.7	* 1.4	23.0	454.2	41.2	495.3	5.1	91.7
45-54	333.0	25.4	358.4	11.3	* 1.0	12.4	370.8	63.6	434.4	3.3	85.4
55-59	98.9	10.3	109.3	* 3.7	* 0.7	* 4.4	113.6	50.0	163.7	* 3.8	69.4
60-64	48.2	8.9	57.1	* 1.4	* 0.7	* 2.1	59.1	74.5	133.6	* 3.5	44.3
65 and over	22.6	13.0	35.6	* 0.4	* 0.3	* 0.7	36.3	323.7	360.0	* 1.9	10.1
<b>Total</b>	<b>1,503.6</b>	<b>190.4</b>	<b>1,694.0</b>	<b>95.8</b>	<b>18.0</b>	<b>113.8</b>	<b>1,807.8</b>	<b>713.1</b>	<b>2,520.9</b>	<b>6.3</b>	<b>71.7</b>
<b>MARRIED FEMALES</b>											
15-19	* 0.3	* 1.1	* 1.4	* 0.4	* 0.0	* 0.4	* 1.9	* 2.2	* 4.1	* 23.7	* 46.1
20-24	32.5	7.6	40.1	* 2.4	* 1.3	* 3.7	43.8	20.4	64.2	* 8.5	68.2
25-34	117.1	76.9	194.0	7.0	* 5.2	12.2	206.2	112.1	318.3	5.9	64.8
35-44	130.7	116.9	247.6	8.3	* 3.7	12.0	259.6	115.1	374.7	4.6	69.3
45-54	126.0	92.9	219.0	* 3.5	* 2.0	* 5.5	224.5	103.0	327.6	* 2.5	68.5
55-59	25.0	24.9	50.0	* 0.0	* 1.7	* 1.7	51.7	62.2	113.9	* 3.3	45.4
60-64	7.5	11.2	18.7	* 0.0	* 0.3	* 0.3	19.0	74.6	93.6	* 1.6	20.3
65 and over	* 2.4	7.1	9.5	* 0.0	* 0.0	* 0.0	9.5	182.9	192.5	* 0.0	5.0
<b>Total</b>	<b>441.6</b>	<b>338.7</b>	<b>780.3</b>	<b>21.7</b>	<b>14.2</b>	<b>35.9</b>	<b>816.2</b>	<b>672.5</b>	<b>1,488.8</b>	<b>4.4</b>	<b>54.8</b>
<b>ALL FEMALES</b>											
15-19	32.1	72.8	105.0	8.0	14.2	22.1	127.1	89.5	216.7	17.4	58.7
20-24	104.1	43.8	148.0	10.3	8.6	18.9	166.9	52.7	219.6	11.3	76.0
25-34	215.4	98.8	314.1	13.4	8.3	21.8	335.9	153.6	489.5	6.5	68.6
35-44	178.8	143.6	322.4	15.4	* 5.0	20.4	342.8	152.6	495.4	6.0	69.2
45-54	171.6	110.2	281.7	8.2	* 2.7	11.0	292.7	133.4	426.1	3.7	68.7
55-59	39.9	32.4	72.2	* 1.3	* 1.7	* 3.0	75.3	83.4	158.7	* 4.0	47.4
60-64	9.9	14.8	24.7	* 0.4	* 0.6	* 1.0	25.7	107.8	133.5	* 3.7	19.2
65 and over	* 3.9	10.3	14.1	* 0.0	* 0.0	* 0.0	14.1	449.6	463.7	* 0.0	3.0
<b>Total</b>	<b>755.7</b>	<b>526.6</b>	<b>1,282.3</b>	<b>57.0</b>	<b>41.2</b>	<b>98.2</b>	<b>1,380.5</b>	<b>1,222.7</b>	<b>2,603.2</b>	<b>7.1</b>	<b>53.0</b>
<b>PERSONS</b>											
15-19	87.4	126.1	213.6	22.9	23.4	46.3	259.9	184.2	444.1	17.8	58.5
20-24	252.2	70.8	323.1	28.6	12.9	41.5	364.6	79.8	444.4	11.4	82.0
25-34	605.3	127.6	733.0	37.4	8.8	46.2	779.2	191.9	971.1	5.9	80.2
35-44	586.3	167.2	753.5	37.1	6.4	43.5	797.0	193.8	990.8	5.5	80.4
45-54	504.6	135.6	640.2	19.6	* 3.8	23.3	663.5	197.0	860.5	3.5	77.1
55-59	138.8	42.7	181.5	* 5.0	* 2.4	7.4	188.9	133.5	322.4	3.9	58.6
60-64	58.1	23.7	81.8	* 1.7	* 1.3	* 3.0	84.8	182.3	267.1	* 3.6	31.8
65 and over	26.5	23.3	49.7	* 0.4	* 0.3	* 0.7	50.4	773.3	823.7	* 1.4	6.1
<b>Total</b>	<b>2,259.3</b>	<b>717.0</b>	<b>2,976.3</b>	<b>152.8</b>	<b>59.2</b>	<b>212.0</b>	<b>3,188.3</b>	<b>1,935.7</b>	<b>5,124.0</b>	<b>6.6</b>	<b>62.2</b>



**TABLE 4. LABOUR FORCE STATUS: PERSONS AGED 15-24 BY FULL-TIME EDUCATIONAL ATTENDANCE, NSW, FEBRUARY 2000**

Age (years)	Employed			Unemployed			Labour force ('000)	Not in labour force ('000)	Civilian population aged 15 and over ('000)	Unemployment rate (per cent)	Participation rate (per cent)
	Full-time workers ('000)	Part-time workers ('000)	Total ('000)	Looking for full-time work ('000)	Looking for part-time work ('000)	Total ('000)					
<b>ATTENDING SCHOOL OR A TERTIARY EDUCATIONAL INSTITUTION FULL-TIME</b>											
15-19	8.4	91.1	99.5	* 2.9	21.8	24.7	124.2	164.0	288.2	19.9	43.1
15	* 0.0	21.2	21.2	* 0.6	* 5.6	6.2	27.4	57.2	84.6	22.7	32.4
16	* 0.3	25.2	25.5	* 0.9	6.3	7.2	32.8	43.6	76.4	22.1	42.9
17	* 1.9	18.7	20.5	* 0.0	* 3.8	* 3.8	24.4	35.1	59.5	* 15.7	41.0
18	* 2.9	12.7	15.6	* 0.6	* 3.5	* 4.1	19.7	15.2	35.0	* 20.8	56.4
19	* 3.3	13.3	16.7	* 0.7	* 2.6	* 3.3	19.9	12.8	32.8	* 16.4	60.8
20-24	13.3	28.5	41.8	* 1.4	7.6	9.0	50.8	34.6	85.4	17.8	59.5
20	* 4.8	11.1	15.9	* 0.0	* 3.7	* 3.7	19.6	10.0	29.6	* 18.8	66.2
21	* 3.7	5.9	9.6	* 0.7	* 3.3	* 3.9	13.6	8.8	22.4	* 29.0	60.6
22	* 2.6	* 5.5	8.1	* 0.0	* 0.3	* 0.3	8.5	7.7	16.1	* 4.0	52.4
23	* 1.4	* 3.7	* 5.1	* 0.0	* 0.4	* 0.4	* 5.4	* 4.7	10.1	* 6.7	* 53.8
24	* 0.8	* 2.3	* 3.1	* 0.7	* 0.0	* 0.7	* 3.8	* 3.5	7.2	* 19.4	* 52.3
<b>Total aged 15-24</b>	<b>21.7</b>	<b>119.6</b>	<b>141.3</b>	<b>* 4.3</b>	<b>29.4</b>	<b>33.7</b>	<b>175.0</b>	<b>198.6</b>	<b>373.6</b>	<b>19.3</b>	<b>46.8</b>
<b>NOT ATTENDING SCHOOL OR A TERTIARY EDUCATIONAL INSTITUTION FULL-TIME (a)</b>											
15-19	79.0	35.0	114.0	20.1	* 1.6	21.7	135.7	20.2	155.9	16.0	87.0
15	* 1.7	* 0.3	* 2.1	* 0.5	* 0.0	* 0.5	* 2.6	* 1.0	* 3.6	* 20.4	* 73.1
16	* 4.8	* 2.2	7.0	* 2.4	* 0.0	* 2.4	9.4	* 2.9	12.3	* 25.3	76.3
17	15.6	* 5.3	20.9	* 5.2	* 0.3	* 5.6	26.5	* 3.4	29.8	* 21.1	88.8
18	25.2	14.9	40.1	6.7	* 0.9	7.6	47.7	6.4	54.1	15.8	88.1
19	31.7	12.3	43.9	* 5.2	* 0.4	* 5.6	49.6	6.5	56.1	* 11.3	88.3
20-24	239.0	42.3	281.3	27.2	* 5.3	32.5	313.8	45.2	358.9	10.4	87.4
20	38.6	8.0	46.6	* 3.2	* 0.8	* 4.1	50.7	7.8	58.5	* 8.0	86.6
21	42.6	11.2	53.8	* 4.7	* 0.8	* 5.5	59.4	6.1	65.5	* 9.3	90.7
22	48.9	8.6	57.6	6.2	* 2.2	8.4	65.9	* 5.7	71.6	12.7	92.1
23	51.4	6.5	57.9	6.3	* 0.6	6.9	64.8	14.3	79.1	10.7	81.9
24	57.4	8.0	65.4	6.8	* 0.8	7.6	73.0	11.3	84.3	10.4	86.6
<b>Total aged 15-24</b>	<b>318.0</b>	<b>77.4</b>	<b>395.3</b>	<b>47.3</b>	<b>6.9</b>	<b>54.1</b>	<b>449.5</b>	<b>65.4</b>	<b>514.9</b>	<b>12.0</b>	<b>87.3</b>
<b>TOTAL</b>											
15-19	87.4	126.1	213.6	22.9	23.4	46.3	259.9	184.2	444.1	17.8	58.5
15	* 1.7	21.5	23.2	* 1.1	* 5.6	6.8	30.0	58.2	88.2	22.5	34.0
16	* 5.1	27.4	32.6	* 3.3	6.3	9.6	42.2	46.5	88.7	22.8	47.6
17	17.5	24.0	41.4	* 5.2	* 4.2	9.4	50.8	38.5	89.3	18.5	56.9
18	28.1	27.7	55.7	7.3	* 4.4	11.7	67.4	21.7	89.1	17.3	75.7
19	35.0	25.6	60.6	6.0	* 2.9	8.9	69.5	19.4	88.9	12.8	78.2
20-24	252.2	70.8	323.1	28.6	12.9	41.5	364.6	79.8	444.4	11.4	82.0
20	43.4	19.1	62.5	* 3.2	* 4.5	7.7	70.3	17.8	88.1	11.0	79.8
21	46.3	17.1	63.5	* 5.4	* 4.1	9.5	72.9	14.9	87.8	13.0	83.0
22	51.6	14.1	65.7	6.2	* 2.5	8.7	74.4	13.3	87.7	11.7	84.8
23	52.8	10.2	63.0	6.3	* 1.0	7.3	70.3	18.9	89.2	10.4	78.8
24	58.1	10.3	68.4	7.6	* 0.8	8.4	76.8	14.7	91.5	10.9	83.9
<b>Total aged 15-24</b>	<b>339.7</b>	<b>197.0</b>	<b>536.6</b>	<b>51.6</b>	<b>36.3</b>	<b>87.9</b>	<b>624.5</b>	<b>264.0</b>	<b>888.5</b>	<b>14.1</b>	<b>70.3</b>

(a) Includes institutionalised persons.

**TABLE 5. LABOUR FORCE STATUS: FAMILY STATUS, NSW, FEBRUARY 2000**

Family status	Employed			Unemployed			Labour force	Not in labour force	Civilian population aged 15 and over	Unemployment rate (per cent)	Participation rate (per cent)
	Full-time workers ('000)	Part-time workers ('000)	Total ('000)	Looking for full-time work ('000)	Looking for part-time work ('000)	Total ('000)					
<i>Member of a family</i>	1,840.0	637.3	2,477.3	118.5	49.2	167.7	2,645.0	1,423.4	4,068.4	6.3	65.0
Husband	985.3	81.2	1,066.5	37.7	* 2.9	40.6	1,107.1	383.9	1,491.0	3.7	74.3
With children aged 0-14 present	524.9	34.4	559.3	21.7	* 1.5	23.2	582.5	47.5	629.9	4.0	92.5
Without children aged 0-14 present	460.4	46.8	507.2	16.0	* 1.4	17.4	524.6	336.5	861.1	3.3	60.9
With dependants present	594.9	38.6	633.5	23.2	* 1.5	24.6	658.1	60.3	718.4	3.7	91.6
Without dependants present	390.4	42.7	433.0	14.6	* 1.4	15.9	449.0	323.6	772.6	3.5	58.1
Wife	426.9	331.3	758.2	21.3	13.9	35.2	793.4	640.1	1,433.5	4.4	55.3
With children aged 0-14 present	152.0	186.4	338.4	12.9	9.2	22.1	360.4	234.7	595.2	6.1	60.6
Without children aged 0-14 present	274.9	145.0	419.8	8.5	* 4.7	13.1	433.0	405.3	838.3	3.0	51.6
With dependants present	189.1	209.9	399.0	13.6	9.5	23.1	422.1	261.5	683.6	5.5	61.7
Without dependants present	237.7	121.5	359.2	7.8	* 4.3	12.1	371.3	378.5	749.9	3.3	49.5
Not-married male family head	29.9	* 4.0	33.9	* 0.7	* 0.0	* 0.7	34.5	14.5	49.1	* 2.0	70.4
With children aged 0-14 present	9.0	* 1.4	10.4	* 0.3	* 0.0	* 0.3	10.7	* 3.1	13.8	* 3.2	77.6
Without children aged 0-14 present	20.9	* 2.6	23.5	* 0.3	* 0.0	* 0.3	23.8	11.4	35.3	* 1.4	67.5
With dependants present	14.9	* 2.1	17.0	* 0.3	* 0.0	* 0.3	17.3	* 5.9	23.2	* 2.0	74.6
Without dependants present	15.0	* 1.9	16.9	* 0.3	* 0.0	* 0.3	17.2	8.7	25.9	* 2.0	66.6
Not-married female family head	54.0	44.3	98.3	8.2	* 4.4	12.7	110.9	120.2	231.1	11.4	48.0
With children aged 0-14 present	25.8	30.6	56.4	5.9	* 3.8	9.7	66.1	69.3	135.3	14.7	48.8
Without children aged 0-14 present	28.2	13.7	41.9	* 2.3	* 0.7	* 3.0	44.8	51.0	95.8	* 6.6	46.8
With dependants present	36.7	36.9	73.7	6.6	* 4.4	11.1	84.8	74.2	159.0	13.1	53.3
Without dependants present	17.2	7.4	24.6	* 1.6	* 0.0	* 1.6	26.2	46.0	72.2	* 6.1	36.3
Full-time student aged 15-24 (a)	14.5	104.5	119.0	* 4.3	24.8	29.1	148.1	163.6	311.6	19.6	47.5
Other child of family head	301.8	66.3	368.2	43.4	* 2.5	45.9	414.0	55.4	469.4	11.1	88.2
Other relative of family head	27.7	* 5.6	33.3	* 2.8	* 0.8	* 3.6	36.9	45.7	82.6	* 9.8	44.7
<i>Not a member of a family</i>	346.9	57.9	404.7	29.9	7.8	37.7	442.4	352.7	795.1	8.5	55.6
Living alone	184.5	28.9	213.4	16.9	* 3.4	20.3	233.7	301.5	535.2	8.7	43.7
Not living alone	162.4	29.0	191.4	13.0	* 4.3	17.3	208.7	51.3	260.0	8.3	80.3
<i>Not family coded</i>	72.4	21.8	94.2	* 4.4	* 2.3	6.7	100.9	159.6	260.5	6.6	38.7
<b>Total</b>	<b>2,259.3</b>	<b>717.0</b>	<b>2,976.3</b>	<b>152.8</b>	<b>59.2</b>	<b>212.0</b>	<b>3,188.3</b>	<b>1,935.7</b>	<b>5,124.0</b>	<b>6.6</b>	<b>62.2</b>

(a) Excludes persons aged 20-24 attending school.

**TABLE 6. EMPLOYED PERSONS: STATUS IN EMPLOYMENT (a), NSW ('000)**

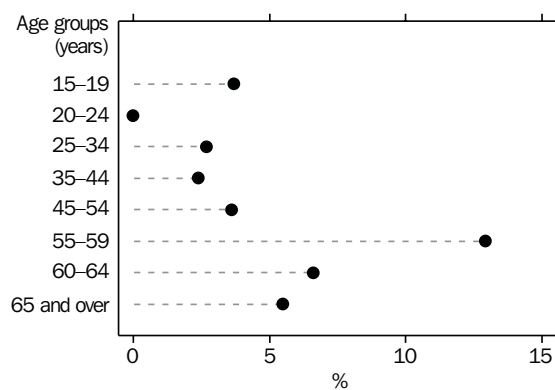
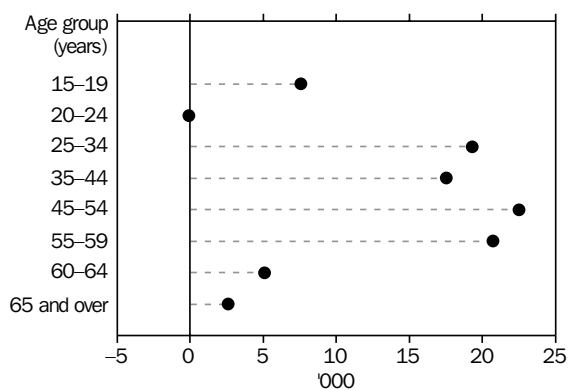
Status in employment	Males			Females			Persons		
	February 1999	November 1999	February 2000	February 1999	November 1999	February 2000	February 1999	November 1999	February 2000
Employees	1,386.5	1,416.0	1,426.9	1,113.0	1,156.7	1,145.0	2,499.5	2,572.8	2,571.9
Employers	79.9	83.4	75.3	34.2	34.1	34.4	114.1	117.4	109.7
Own account workers	168.1	176.3	184.6	77.9	79.2	89.1	245.9	255.4	273.6
<b>Total employed (b)</b>	<b>1,644.9</b>	<b>1,681.8</b>	<b>1,694.0</b>	<b>1,236.4</b>	<b>1,283.3</b>	<b>1,282.3</b>	<b>2,881.3</b>	<b>2,965.1</b>	<b>2,976.3</b>

(a) Status in Employment replaces the previous term Status of Worker. No definitional changes have been made - the only changes are to the classification titles. (b) Includes contributing family workers.

**TABLE 7. EMPLOYED PERSONS: AGE, NSW**  
(\*000)

Month	Age group (years)								Total employed
	15-19	20-24	25-34	35-44	45-54	55-59	60-64	65 and over	
<b>MALES</b>									
1999—									
February	101.6	174.6	402.3	427.4	348.9	104.3	53.0	32.9	1,644.9
1999—									
November	103.9	170.3	417.1	426.0	363.9	111.6	58.4	30.8	1,681.8
December	109.3	184.7	421.3	430.2	362.2	110.8	58.8	33.7	1,711.0
2000—									
January	110.8	177.6	412.4	427.8	355.6	109.1	57.3	29.7	1,680.2
February	108.6	175.1	418.8	431.1	358.4	109.3	57.1	35.6	1,694.0
<b>MARRIED FEMALES</b>									
1999—									
February	* 2.0	32.9	185.1	232.1	204.9	44.2	17.8	7.1	726.1
1999—									
November	* 1.4	39.7	181.3	250.9	217.6	50.9	19.4	10.3	771.4
December	* 2.0	38.4	188.3	254.9	221.2	49.6	18.3	8.3	781.1
2000—									
January	* 0.7	37.8	180.4	239.6	210.3	49.2	16.7	6.6	741.2
February	* 1.4	40.1	194.0	247.6	219.0	50.0	18.7	9.5	780.3
<b>ALL FEMALES</b>									
1999—									
February	104.5	148.6	311.3	308.6	268.9	56.6	23.7	14.2	1,236.4
1999—									
November	96.6	152.0	308.7	334.8	279.5	69.5	25.8	16.4	1,283.3
December	110.6	156.1	315.4	333.3	283.1	69.8	24.7	13.9	1,307.0
2000—									
January	111.3	146.8	308.6	314.8	272.6	69.5	22.1	11.7	1,257.2
February	105.0	148.0	314.1	322.4	281.7	72.2	24.7	14.1	1,282.3
<b>PERSONS</b>									
1999—									
February	206.0	323.2	713.7	736.0	617.7	160.8	76.7	47.1	2,881.3
1999—									
November	200.5	322.2	725.8	760.8	643.4	181.0	84.3	47.1	2,965.1
December	219.9	340.9	736.6	763.5	645.3	180.6	83.5	47.6	3,017.9
2000—									
January	222.1	324.4	721.0	742.5	628.2	178.5	79.4	41.4	2,937.4
February	213.6	323.1	733.0	753.5	640.2	181.5	81.8	49.7	2,976.3

**ANNUAL CHANGE IN EMPLOYMENT BY AGE, NSW FEBRUARY 1999 TO FEBRUARY 2000**

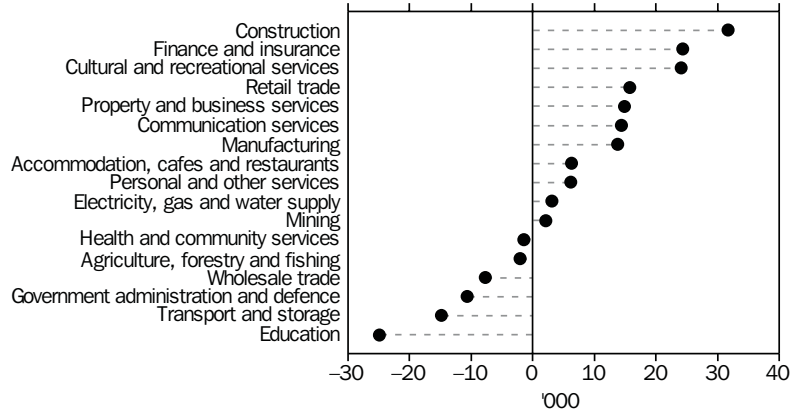


**TABLE 8. EMPLOYED PERSONS: INDUSTRY, NSW**  
(’000)

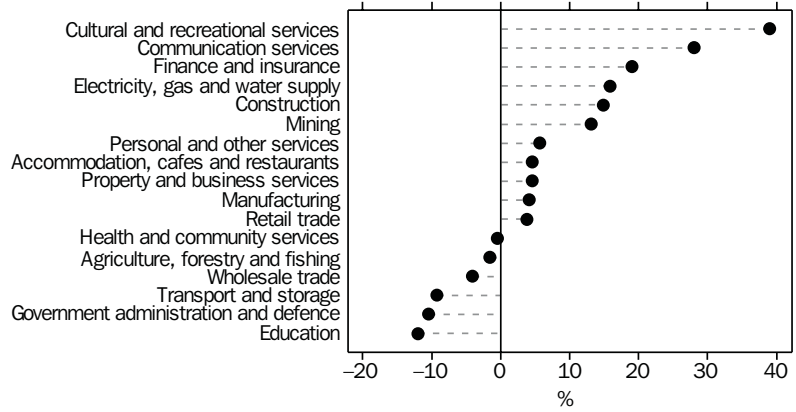
<i>Industry division and subdivision</i>	<i>Males</i>		<i>Females</i>		<i>Persons</i>	
	<i>February 1999</i>	<i>February 2000</i>	<i>February 1999</i>	<i>February 2000</i>	<i>February 1999</i>	<i>February 2000</i>
<i>Agriculture, forestry and fishing</i>	90.6	88.8	36.9	36.7	127.5	125.4
Agriculture	78.6	77.7	34.4	35.0	112.9	112.7
Services to agriculture; hunting and trapping	7.2	6.7	* 0.6	* 0.6	7.8	7.3
Forestry and logging	* 3.7	* 1.4	* 1.6	* 0.4	* 5.4	* 1.8
Commercial fishing	* 1.1	* 2.9	* 0.3	* 0.7	* 1.4	* 3.6
<i>Mining</i>	15.0	17.7	* 1.1	* 0.4	16.0	18.1
Coal mining	9.6	10.7	* 0.4	* 0.0	10.0	10.7
Oil and gas extraction	* 0.3	* 0.4	* 0.0	* 0.0	* 0.3	* 0.4
Metal ore mining	* 2.6	* 3.4	* 0.7	* 0.4	* 3.3	* 3.7
Other mining	* 2.1	* 3.0	* 0.0	* 0.0	* 2.1	* 3.0
Services to mining	* 0.4	* 0.4	* 0.0	* 0.0	* 0.4	* 0.4
<i>Manufacturing</i>	251.7	252.2	86.1	99.3	337.8	351.5
Food, beverage and tobacco manufacturing	35.4	33.0	13.6	16.1	49.0	49.0
Textile, clothing, footwear and leather manufacturing	13.8	11.4	14.1	14.9	27.9	26.3
Wood and paper product manufacturing	14.1	15.3	6.3	* 4.8	20.4	20.2
Printing, publishing and recorded media	27.9	26.5	12.3	14.5	40.2	41.0
Petroleum, coal, chemical and associated product manufacturing	22.3	25.5	10.3	15.9	32.6	41.5
Non-metallic mineral product manufacturing	13.5	12.4	* 0.7	* 0.3	14.2	12.7
Metal product manufacturing	57.9	52.8	9.9	10.7	67.8	63.5
Machinery and equipment manufacturing	46.4	52.5	13.6	16.6	60.0	69.2
Other manufacturing	20.4	22.7	* 5.4	* 5.4	25.8	28.2
<i>Electricity, gas and water supply</i>	14.9	18.4	* 4.7	* 4.3	19.6	22.7
Electricity and gas supply	9.0	13.3	* 3.0	* 3.3	12.0	16.6
Water supply, sewerage and drainage services	* 5.9	* 5.1	* 1.7	* 1.0	7.6	6.1
<i>Construction</i>	183.2	215.3	28.9	28.5	212.1	243.8
General construction	64.5	77.1	12.5	11.1	77.0	88.2
Construction trade services	118.7	138.2	16.4	17.4	135.1	155.6
<i>Wholesale trade</i>	127.4	127.6	58.9	51.0	186.3	178.6
Basic material wholesaling	24.4	32.0	9.7	9.7	34.1	41.7
Machinery and motor vehicle wholesaling	62.8	52.8	19.4	10.8	82.2	63.6
Personal and household good wholesaling	40.1	42.8	29.8	30.5	69.9	73.3
<i>Retail trade</i>	207.9	208.4	208.7	223.9	416.6	432.3
Food retailing	72.1	71.8	88.4	90.2	160.5	162.0
Personal and household good retailing	66.6	74.2	103.7	113.9	170.3	188.1
Motor vehicle retailing and services	69.1	62.4	16.7	19.8	85.8	82.2
<i>Accommodation, cafes and restaurants</i>	62.1	72.5	77.9	73.7	140.0	146.3
<i>Transport and storage</i>	114.5	107.6	45.3	37.4	159.8	145.0
Road transport	63.4	51.5	14.4	13.2	77.8	64.7
Rail transport	13.1	14.2	* 5.0	* 2.0	18.0	16.1
Water transport	* 2.8	* 2.1	* 0.3	* 2.0	* 3.1	* 4.1
Air and Space transport	16.6	18.0	10.2	6.4	26.7	24.3
Other transport	* 1.0	* 0.0	* 0.3	* 0.0	* 1.3	* 0.0
Services to transport	13.1	12.5	14.2	11.5	27.3	24.0
Storage	* 4.5	9.3	* 1.0	* 2.4	* 5.5	11.7
<i>Communication services</i>	34.7	47.3	16.7	18.6	51.5	65.9
<i>Finance and insurance</i>	58.3	73.2	69.7	79.1	128.0	152.3
Finance	27.5	35.5	42.5	42.8	70.0	78.3
Insurance	12.4	13.7	16.1	13.5	28.5	27.2
Services to finance and insurance	18.4	24.0	11.0	22.8	29.4	46.8
<i>Property and business services</i>	190.3	200.7	139.1	143.7	329.5	344.4
Property services	21.4	23.5	14.6	17.6	36.1	41.0
Business services	168.9	177.3	124.5	126.1	293.4	303.3
<i>Government administration and defence</i>	61.7	53.6	39.6	37.1	101.3	90.7
Government administration	58.4	50.1	36.0	35.1	94.4	85.2
Defence	* 3.3	* 3.5	* 3.6	* 2.0	6.9	* 5.5
<i>Education</i>	71.0	50.9	135.3	130.6	206.3	181.5
<i>Health and community services</i>	72.8	54.6	205.3	222.1	278.1	276.6
Health services	60.4	42.2	159.2	165.4	219.6	207.6
Community services	12.4	12.4	46.1	56.7	58.5	69.1
<i>Cultural and recreational services</i>	33.4	45.6	28.0	39.9	61.5	85.5
Motion picture, radio and television services	9.2	14.7	8.5	9.6	17.7	24.2
Libraries, museums and the arts	9.1	13.4	8.8	13.6	18.0	27.0
Sport and recreation	15.1	17.5	10.7	16.7	25.8	34.3
<i>Personal and other services</i>	55.3	59.5	54.1	56.2	109.4	115.6
Personal services	19.1	23.1	29.3	38.9	48.4	62.0
Other services	35.5	36.1	22.7	17.3	58.2	53.3
Private households employing staff	* 0.7	* 0.3	* 2.1	* 0.0	* 2.8	* 0.3
<b>Total employed</b>	<b>1,644.9</b>	<b>1,694.0</b>	<b>1,236.4</b>	<b>1,282.3</b>	<b>2,881.3</b>	<b>2,976.3</b>

ANNUAL CHANGE IN EMPLOYMENT BY INDUSTRY DIVISION, NSW, FEBRUARY 1999 TO FEBRUARY 2000

NUMBER



PROPORTION

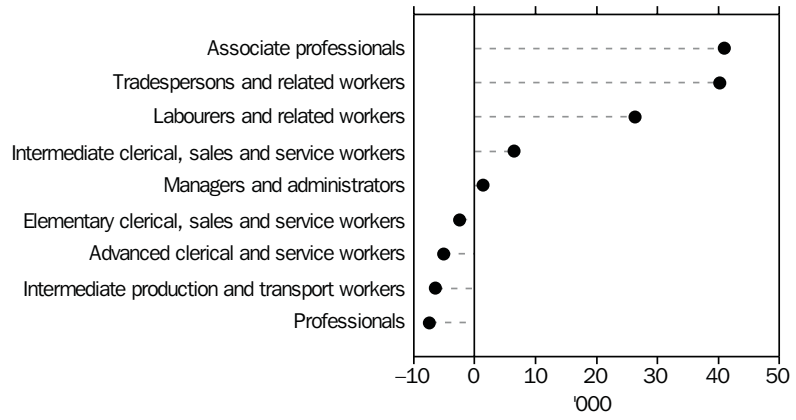


**TABLE 9. EMPLOYED PERSONS: OCCUPATION, NSW  
(’000)**

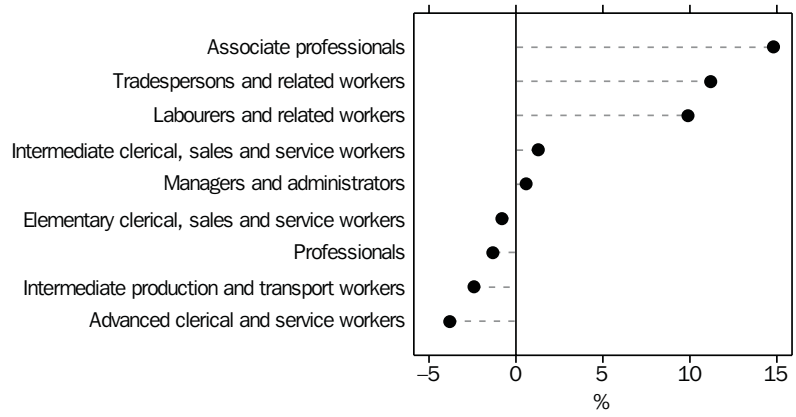
<i>Major and sub-major occupation group</i>	<i>Males</i>		<i>Females</i>		<i>Persons</i>	
	<i>February 1999</i>	<i>February 2000</i>	<i>February 1999</i>	<i>February 2000</i>	<i>February 1999</i>	<i>February 2000</i>
<i>Managers and administrators</i>	176.4	183.2	49.8	44.4	226.2	227.6
Generalist managers	41.4	51.8	* 4.5	* 5.9	45.8	57.7
Specialist managers	80.6	78.8	25.8	22.8	106.4	101.6
Farmers and farm managers	54.4	52.6	19.5	15.7	74.0	68.4
<i>Professionals</i>	295.6	282.1	266.6	272.7	562.2	554.8
Science, building and engineering professionals	54.7	46.2	7.8	9.2	62.5	55.4
Business and information professionals	105.4	118.7	55.3	60.6	160.6	179.3
Health professionals	33.1	25.6	76.4	73.5	109.5	99.1
Education professionals	46.5	33.6	87.7	82.1	134.1	115.7
Social, arts and miscellaneous professionals	55.9	58.1	39.5	47.3	95.4	105.4
<i>Associate professionals</i>	185.7	202.9	90.0	113.7	275.7	316.6
Science, engineering and related associate professionals	31.9	28.9	* 5.7	10.2	37.6	39.0
Business and administrative associate professionals	43.4	62.3	34.4	45.2	77.8	107.5
Managing supervisors (sales and service)	83.6	87.6	33.0	42.6	116.6	130.1
Health and welfare associate professionals	7.6	* 4.2	8.9	7.6	16.6	11.7
Other associate professionals	19.2	20.0	7.9	8.1	27.1	28.2
<i>Tradespersons and related workers</i>	325.5	360.3	33.6	38.9	359.1	399.3
Mechanical and fabrication engineering tradespersons	62.4	64.3	* 0.7	* 0.6	63.1	64.9
Automotive tradespersons	39.9	41.5	* 0.0	* 0.0	39.9	41.5
Electrical and electronics tradespersons	57.9	76.0	* 0.7	* 0.7	58.6	76.6
Construction tradespersons	81.9	90.4	* 1.6	* 1.8	83.5	92.2
Food tradespersons	23.1	16.8	9.0	8.1	32.1	24.9
Skilled agricultural and horticultural workers	18.5	24.5	* 3.9	* 1.1	22.4	25.7
Other tradespersons and related workers	41.9	46.9	17.6	26.5	59.5	73.4
<i>Advanced clerical and service workers</i>	13.7	12.3	122.0	118.3	135.7	130.6
Secretaries and personal assistants	* 1.7	* 0.7	85.3	84.5	87.0	85.1
Other advanced clerical and service workers	12.0	11.6	36.7	33.9	48.7	45.5
<i>Intermediate clerical, sales and service workers</i>	146.8	154.5	367.7	366.6	514.5	521.0
Intermediate clerical workers	76.1	75.0	235.2	234.9	311.3	309.9
Intermediate sales and related workers	32.1	40.6	13.0	18.0	45.0	58.6
Intermediate service workers	38.7	38.9	119.5	113.6	158.2	152.5
<i>Intermediate production and transport workers</i>	233.3	224.5	31.0	34.4	264.3	258.9
Intermediate plant operators	53.9	50.2	* 1.9	* 1.7	55.8	51.9
Intermediate machine operators	14.3	16.1	10.9	10.4	25.2	26.5
Road and rail transport drivers	97.3	92.4	* 5.5	7.8	102.8	100.2
Other intermediate production and transport workers	67.7	65.9	12.7	14.5	80.5	80.3
<i>Elementary clerical, sales and service workers</i>	95.5	89.3	183.6	187.4	279.1	276.7
Elementary clerks	10.4	10.7	19.6	15.2	30.0	25.9
Elementary sales workers	64.4	60.0	153.6	161.2	217.9	221.2
Elementary service workers	20.8	18.6	10.4	11.0	31.2	29.6
<i>Labourers and related workers</i>	172.4	184.9	92.1	105.9	264.5	290.8
Cleaners	30.7	30.9	36.1	35.6	66.8	66.6
Factory labourers	45.7	50.0	25.4	31.0	71.1	80.9
Other labourers and related workers	96.0	104.0	30.6	39.3	126.6	143.3
<b>Total employed</b>	<b>1,644.9</b>	<b>1,694.0</b>	<b>1,236.4</b>	<b>1,282.3</b>	<b>2,881.3</b>	<b>2,976.3</b>

ANNUAL CHANGE IN EMPLOYMENT BY OCCUPATION GROUP, NSW, FEBRUARY 1999 TO FEBRUARY 2000

NUMBER



PROPORTION



**TABLE 10. UNEMPLOYED PERSONS: AGE, NSW  
(’000)**

Month	Age group (years)						Total unemployed
	15-19	20-24	25-34	35-44	45-54	55 and over	
<b>MALES</b>							
1999— February	22.0	23.4	33.2	23.3	18.6	12.4	133.1
1999— November	17.8	15.0	24.6	17.8	10.8	9.1	95.1
1999— December	30.7	15.8	25.6	19.2	15.1	9.6	116.1
2000— January	24.8	20.8	28.8	21.4	16.4	7.6	119.9
2000— February	24.2	22.6	24.5	23.0	12.4	7.1	113.8
<b>FEMALES</b>							
1999— February	24.0	17.5	21.8	24.3	12.8	* 4.2	104.5
1999— November	16.5	8.8	16.0	18.0	9.2	* 3.3	71.8
1999— December	20.5	11.6	17.6	17.9	9.9	* 3.4	80.9
2000— January	18.3	17.0	16.5	17.1	9.1	* 2.7	80.7
2000— February	22.1	18.9	21.8	20.4	11.0	* 4.0	98.2
<b>PERSONS</b>							
1999— February	46.0	40.9	55.0	47.6	31.3	16.6	237.5
1999— November	34.3	23.8	40.6	35.8	20.0	12.4	167.0
1999— December	51.2	27.4	43.3	37.1	25.0	13.0	197.0
2000— January	43.1	37.9	45.3	38.5	25.5	10.3	200.6
2000— February	46.3	41.5	46.2	43.5	23.3	11.1	212.0

**TABLE 11. UNEMPLOYED PERSONS: UNEMPLOYMENT RATE BY AGE, NSW  
(per cent)**

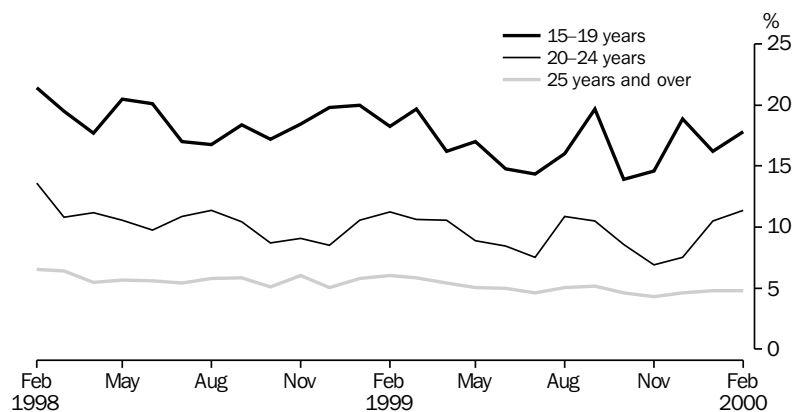
Month	Age group (years)						Total unemployment rate
	15-19	20-24	25-34	35-44	45-54	55 and over	
<b>MALES</b>							
1999— February	17.8	11.8	7.6	5.2	5.1	6.1	7.5
1999— November	14.7	8.1	5.6	4.0	2.9	4.3	5.4
1999— December	21.9	7.9	5.7	4.3	4.0	4.5	6.4
2000— January	18.3	10.5	6.5	4.8	4.4	3.8	6.7
2000— February	18.2	11.4	5.5	5.1	3.3	3.4	6.3
<b>FEMALES</b>							
1999— February	18.7	10.5	6.5	7.3	4.5	* 4.3	7.8
1999— November	14.6	5.5	4.9	5.1	3.2	* 2.9	5.3
1999— December	15.7	6.9	5.3	5.1	3.4	* 3.0	5.8
2000— January	14.1	10.4	5.1	5.2	3.2	* 2.5	6.0
2000— February	17.4	11.3	6.5	6.0	3.7	* 3.5	7.1
<b>PERSONS</b>							
1999— February	18.3	11.2	7.2	6.1	4.8	5.5	7.6
1999— November	14.6	6.9	5.3	4.5	3.0	3.8	5.3
1999— December	18.9	7.5	5.5	4.6	3.7	4.0	6.1
2000— January	16.2	10.5	5.9	4.9	3.9	3.3	6.4
2000— February	17.8	11.4	5.9	5.5	3.5	3.4	6.6



**TABLE 12. UNEMPLOYED PERSONS: INDUSTRY AND OCCUPATION OF LAST FULL-TIME JOB, NSW, FEBRUARY 2000**  
(’000)

	Males	Females	Persons
<i>Had worked for two weeks or more in a full-time job in the last two years</i>	51.4	32.7	84.1
Industry division—			
Agriculture, forestry and fishing	* 2.1	* 0.7	* 2.8
Manufacturing	9.8	* 2.8	12.6
Construction	9.2	* 0.3	9.5
Wholesale trade	* 3.1	* 1.1	* 4.2
Retail trade	7.9	6.5	14.4
Accommodation, cafes and restaurants	* 4.7	* 5.0	9.8
Transport and storage	* 1.8	* 0.0	* 1.8
Finance and insurance	* 1.4	* 2.5	* 3.9
Property and business services	* 5.0	* 4.4	9.4
Education	* 0.8	* 2.3	* 3.1
Health and community services	* 0.7	* 4.1	* 4.8
Cultural and recreational services	* 0.0	* 0.0	* 0.0
Personal and other services	* 0.4	* 1.0	* 1.4
Other industries	* 4.4	* 1.9	6.4
Major occupation group—			
Managers and administrators	* 1.4	* 0.3	* 1.7
Professionals	* 4.7	* 4.6	9.3
Associate professionals	* 4.1	* 3.6	7.7
Tradespersons and related workers	12.6	* 0.4	13.0
Advanced clerical and service workers	* 0.0	* 1.1	* 1.1
Intermediate clerical, sales and service workers	* 3.9	10.9	14.9
Intermediate production and transport workers	9.2	* 0.7	9.9
Elementary clerical, sales and service workers	* 5.6	8.6	14.2
Labourers and related workers	10.0	* 2.3	12.3
<i>Had not worked full-time for two weeks or more in the last two years</i>	59.4	58.8	118.2
Looking for first job	16.8	11.3	28.1
Had worked at some time in the past	42.6	47.5	90.1
<i>Stood down</i>	* 3.0	6.7	9.7
<b>Total unemployed</b>	<b>113.8</b>	<b>98.2</b>	<b>212.0</b>

UNEMPLOYMENT RATE BY AGE, NSW



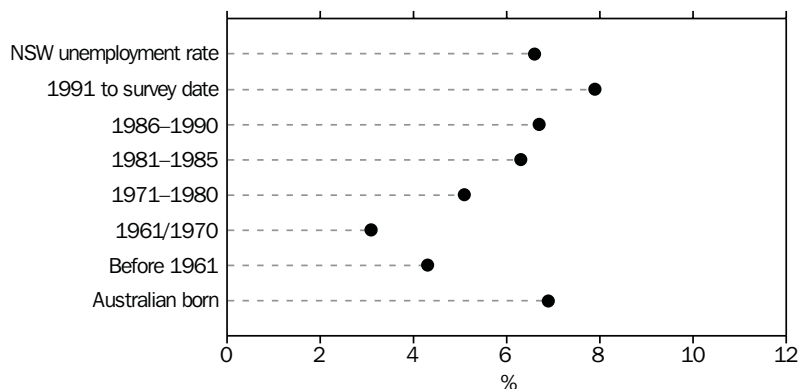
**TABLE 13. UNEMPLOYED PERSONS: DURATION OF UNEMPLOYMENT, NSW**

Duration of unemployment (weeks)	Males		Females		Persons				
	February 1999	February 2000	February 1999	February 2000	February 1999	November 1999	December 1999	January 2000	February 2000
	— '000 —								
<i>Under 52</i>	86.4	75.3	73.6	79.8	160.0	116.7	145.3	150.0	155.1
Under 2	10.6	8.0	11.6	13.8	22.3	13.7	25.5	23.2	21.8
2 and under 4	7.3	9.3	11.8	16.6	19.1	12.1	22.9	24.3	25.9
4 and under 8	20.3	15.0	16.7	17.4	37.0	19.7	22.4	37.7	32.3
8 and under 13	14.8	15.7	13.9	11.6	28.8	17.1	23.4	17.5	27.3
13 and under 26	19.0	14.8	9.4	10.8	28.4	22.0	22.7	21.1	25.6
26 and under 39	10.5	8.4	7.3	8.0	17.8	21.1	19.0	18.0	16.4
39 and under 52	* 3.7	* 4.2	* 3.0	* 1.7	6.6	11.0	9.4	8.0	* 5.9
<i>52 and over</i>	46.7	38.5	30.9	18.4	77.5	50.2	51.7	50.6	56.9
52 and under 104	19.2	11.5	14.2	* 4.7	33.4	15.9	18.1	15.8	16.3
104 and over	27.5	27.0	16.6	13.6	44.1	34.3	33.6	34.8	40.6
<b>Total unemployed</b>	<b>133.1</b>	<b>113.8</b>	<b>104.5</b>	<b>98.2</b>	<b>237.5</b>	<b>167.0</b>	<b>197.0</b>	<b>200.6</b>	<b>212.0</b>
	— Weeks —								
Average	58.8	63.4	47.5	34.6	53.8	53.9	46.5	45.9	50.1
Median	19	17	11	8	15	24	13	12	12

**TABLE 14. UNEMPLOYED PERSONS: UNEMPLOYMENT RATE BY BIRTHPLACE AND PERIOD OF ARRIVAL, NSW (per cent)**

	February 1999	November 1999	December 1999	January 2000	February 2000
<b>Birthplace—</b>					
<i>Australia</i>	7.1	5.4	6.3	6.3	6.9
<i>Outside Australia</i>	9.1	5.2	5.6	6.7	5.9
Main English speaking countries	6.3	4.2	3.4	5.6	5.4
Other countries	10.4	5.7	6.7	7.3	6.2
<b>Period of arrival of overseas born—</b>					
Before 1961	* 6.0	* 3.4	* 3.3	* 2.3	* 4.3
1961-1970	4.9	3.8	* 3.1	* 3.0	* 3.1
1971-1980	7.0	4.6	4.9	5.9	5.1
1981-1985	9.8	9.4	7.2	9.0	6.3
1986-1990	10.3	* 2.8	7.5	7.6	6.7
1991 to survey date	14.1	7.2	6.8	9.7	7.9
<b>Total unemployment rate</b>	<b>7.6</b>	<b>5.3</b>	<b>6.1</b>	<b>6.4</b>	<b>6.6</b>

**UNEMPLOYMENT RATE BY PERIOD OF ARRIVAL OF OVERSEAS BORN, NSW—FEBRUARY 2000**



**TABLE 15. UNEMPLOYED PERSONS: DURATION OF UNEMPLOYMENT BY AGE, NSW**

Month	Duration of unemployment (weeks)					Total unemployed persons ('000)	Average duration (weeks)	Median duration (weeks)
	Under 13 ('000)	13 and under 26 ('000)	26 and under 39 ('000)	39 and under 104 ('000)	104 and over ('000)			
15-19								
1999— February	31.0	* 5.7	* 4.1	* 4.7	* 0.5	46.0	15.3	8
1999— December	35.2	* 5.1	* 5.1	* 4.5	* 1.4	51.2	15.9	4
2000— January	28.1	* 3.3	* 5.1	* 5.0	* 1.5	43.1	17.6	5
February	28.7	7.1	* 2.2	* 5.5	* 2.9	46.3	20.6	8
20-24								
1999— February	18.8	* 4.0	* 4.8	6.0	7.3	40.9	41.7	14
1999— December	14.4	* 3.4	* 2.0	* 4.0	* 3.6	27.4	37.1	10
2000— January	23.1	* 3.1	* 4.4	* 2.9	* 4.3	37.9	31.3	8
February	21.7	* 4.3	* 3.8	* 5.2	6.4	41.5	41.2	10
25-34								
1999— February	24.1	8.5	* 3.5	9.7	9.2	55.0	47.8	16
1999— December	20.5	* 4.6	* 3.9	* 5.9	8.3	43.3	53.1	13
2000— January	23.3	* 5.6	* 3.1	* 4.4	8.8	45.3	44.9	12
February	25.3	* 4.5	* 3.3	* 3.4	9.8	46.2	48.9	10
35-44								
1999— February	19.0	* 2.8	* 2.1	8.4	15.4	47.6	86.3	33
1999— December	15.0	* 5.6	* 4.3	* 5.5	6.7	37.1	50.7	19
2000— January	15.7	* 5.0	* 2.6	* 5.1	10.2	38.5	65.5	20
February	19.8	* 5.6	* 5.0	* 3.1	9.9	43.5	56.4	17
45 AND OVER								
1999— February	14.3	7.3	* 3.3	11.3	11.7	48.0	75.8	32
1999— December	9.0	* 4.1	* 3.7	7.5	13.7	38.0	83.1	47
2000— January	12.5	* 4.1	* 2.8	6.4	10.0	35.8	75.5	26
February	11.8	* 4.0	* 2.1	* 5.0	11.5	34.5	94.0	34
TOTAL								
1999— February	107.2	28.4	17.8	40.1	44.1	237.5	53.8	15
1999— December	94.1	22.7	19.0	27.5	33.6	197.0	46.5	13
2000— January	102.8	21.1	18.0	23.8	34.8	200.6	45.9	12
February	107.3	25.6	16.4	22.1	40.6	212.0	50.1	12

TABLE 16. LABOUR FORCE STATUS, SYDNEY (MSR)

Month	Employed			Unemployed			Labour force ('000)	Unemployment rate (per cent)	Participation rate (per cent)
	Full-time workers ('000)	Part-time workers ('000)	Total ('000)	Looking for full-time work ('000)	Looking for part-time work ('000)	Total ('000)			
MALES									
February—									
1996	926.3	106.2	1,032.5	76.7	12.2	88.9	1,121.4	7.9	74.7
1997	937.3	101.0	1,038.3	77.8	9.8	87.6	1,125.9	7.8	73.8
1998	952.8	102.7	1,055.5	64.1	13.4	77.5	1,133.1	6.8	73.2
1998—									
December	969.7	120.5	1,090.2	60.5	7.6	68.0	1,158.2	5.9	73.9
1999—									
January	965.7	112.4	1,078.1	64.0	8.0	71.9	1,150.1	6.3	73.3
February	968.0	112.9	1,080.9	61.0	8.7	69.7	1,150.5	6.1	73.2
November	993.2	115.6	1,108.8	38.3	7.8	46.1	1,154.9	4.0	72.5
December	1,010.4	115.9	1,126.3	45.9	11.6	57.5	1,183.8	4.9	74.2
2000—									
January	991.4	109.5	1,100.9	56.0	10.7	66.8	1,167.7	5.7	73.1
February	987.2	123.5	1,110.7	47.9	10.7	58.5	1,169.2	5.0	73.1
MARRIED FEMALES									
February—									
1996	262.1	178.0	440.0	20.3	8.3	28.6	468.7	6.1	54.0
1997	265.4	177.0	442.4	16.2	10.2	26.4	468.9	5.6	55.1
1998	272.4	187.9	460.3	16.6	6.9	23.4	483.7	4.8	53.7
1998—									
December	290.1	198.0	488.1	12.3	5.9	18.2	506.3	3.6	55.8
1999—									
January	279.7	182.6	462.3	11.3	* 3.3	14.6	476.9	3.1	52.7
February	277.7	188.8	466.5	12.8	9.2	22.0	488.6	4.5	54.1
November	284.9	204.4	489.4	7.7	* 4.3	12.0	501.4	2.4	54.4
December	296.2	198.3	494.4	7.5	6.6	14.1	508.5	2.8	55.0
2000—									
January	295.1	179.1	474.2	8.8	* 4.8	13.6	487.8	2.8	53.3
February	301.3	199.5	500.9	13.6	9.7	23.4	524.2	4.5	56.1
ALL FEMALES									
February—									
1996	505.1	282.5	787.7	43.8	21.1	64.9	852.6	7.6	54.4
1997	519.4	286.5	805.9	48.1	26.0	74.1	879.9	8.4	55.3
1998	511.4	291.5	803.0	35.7	21.8	57.5	860.5	6.7	53.3
1998—									
December	543.7	314.4	858.0	30.4	15.2	45.7	903.7	5.1	55.4
1999—									
January	535.2	283.2	818.5	30.9	16.8	47.6	866.1	5.5	53.0
February	534.7	291.7	826.4	32.0	22.1	54.1	880.5	6.1	53.8
November	540.7	317.1	857.8	22.8	11.3	34.1	892.0	3.8	53.9
December	561.0	312.9	873.9	26.1	15.4	41.5	915.4	4.5	55.3
2000—									
January	559.5	284.4	843.9	29.4	16.9	46.3	890.2	5.2	53.7
February	542.2	315.5	857.6	32.7	25.2	57.8	915.5	6.3	55.2
PERSONS									
February—									
1996	1,431.4	388.8	1,820.2	120.5	33.3	153.8	1,974.0	7.8	64.3
1997	1,456.6	387.5	1,844.2	125.8	35.9	161.7	2,005.8	8.1	64.3
1998	1,464.3	394.2	1,858.5	99.8	35.3	135.0	1,993.5	6.8	63.1
1998—									
December	1,513.3	434.9	1,948.2	90.9	22.8	113.7	2,061.9	5.5	64.4
1999—									
January	1,500.9	395.7	1,896.6	94.8	24.7	119.5	2,016.1	5.9	62.9
February	1,502.7	404.6	1,907.3	93.0	30.8	123.8	2,031.0	6.1	63.3
November	1,533.9	432.7	1,966.6	61.1	19.2	80.2	2,046.8	3.9	63.1
December	1,571.4	428.8	2,000.2	72.0	27.0	99.0	2,099.2	4.7	64.6
2000—									
January	1,550.9	394.0	1,944.8	85.5	27.6	113.1	2,057.9	5.5	63.2
February	1,529.4	438.9	1,968.4	80.5	35.8	116.4	2,084.7	5.6	64.0

TABLE 17. LABOUR FORCE STATUS, BALANCE OF NSW (MSR)

Month	Employed			Unemployed			Labour force ('000)	Unemployment rate (per cent)	Participation rate (per cent)
	Full-time workers ('000)	Part-time workers ('000)	Total ('000)	Looking for full-time work ('000)	Looking for part-time work ('000)	Total ('000)			
MALES									
February—									
1996	496.4	60.8	557.2	56.0	* 4.8	60.9	618.0	9.8	70.3
1997	482.2	67.7	549.9	63.4	8.9	72.4	622.3	11.6	70.1
1998	480.1	64.7	544.8	63.6	8.2	71.8	616.6	11.6	68.6
1998—									
December	497.9	70.2	568.1	47.1	6.3	53.5	621.6	8.6	68.5
1999—									
January	481.4	73.4	554.8	60.6	8.3	68.9	623.7	11.0	68.7
February	485.5	78.6	564.1	52.5	10.9	63.4	627.4	10.1	69.0
November	505.8	67.3	573.1	43.2	5.9	49.0	622.1	7.9	67.7
December	519.8	64.9	584.7	49.3	9.3	58.6	643.3	9.1	69.9
2000—									
January	506.2	73.1	579.3	48.8	* 4.3	53.1	632.4	8.4	68.7
February	516.3	67.0	583.3	47.9	7.4	55.3	638.6	8.7	69.3
MARRIED FEMALES									
February—									
1996	139.2	127.2	266.4	11.5	* 4.6	16.1	282.5	5.7	51.3
1997	130.8	121.8	252.6	10.2	6.7	16.9	269.5	6.3	49.9
1998	125.7	131.2	256.9	14.1	* 4.4	22.3	279.2	8.0	49.9
1998—									
December	140.4	124.9	265.3	9.7	* 4.3	14.0	279.3	5.0	51.1
1999—									
January	124.7	121.8	246.4	10.9	* 3.0	13.8	260.3	5.3	48.2
February	130.7	128.9	259.6	11.5	* 5.2	16.7	276.2	6.0	50.9
November	145.3	136.7	282.0	8.8	* 4.0	12.8	294.8	4.3	53.8
December	158.2	128.4	286.7	6.9	* 4.3	11.3	297.9	3.8	53.9
2000—									
January	145.7	121.4	267.1	8.1	* 3.7	11.8	278.9	4.2	49.6
February	140.3	139.1	279.4	8.0	* 4.5	12.6	292.0	4.3	52.7
ALL FEMALES									
February—									
1996	216.0	183.8	399.8	33.1	11.7	44.9	444.6	10.1	49.2
1997	208.5	181.9	390.3	31.4	19.5	50.9	441.2	11.5	48.3
1998	198.0	191.3	389.4	35.5	17.8	53.3	442.7	12.0	48.0
1998—									
December	219.0	199.6	418.6	26.9	14.0	41.0	459.5	8.9	49.4
1999—									
January	204.3	195.2	399.5	31.7	10.7	42.4	441.9	9.6	47.5
February	203.7	206.3	410.0	35.4	15.0	50.4	460.4	10.9	49.4
November	215.7	209.7	425.4	27.7	10.0	37.7	463.1	8.1	49.2
December	227.4	205.7	433.0	28.6	10.9	39.4	472.4	8.3	50.2
2000—									
January	217.4	195.9	413.3	25.9	8.5	34.4	447.7	7.7	47.5
February	213.5	211.1	424.6	24.3	16.0	40.4	465.0	8.7	49.3
PERSONS									
February—									
1996	712.3	244.6	956.9	89.1	16.6	105.7	1,062.7	9.9	59.6
1997	690.7	249.6	940.2	94.8	28.5	123.3	1,063.5	11.6	59.1
1998	678.1	256.1	934.2	99.1	26.0	125.1	1,059.3	11.8	58.2
1998—									
December	716.9	269.8	986.7	74.0	20.4	94.4	1,081.1	8.7	58.8
1999—									
January	685.7	268.6	954.3	92.3	19.0	111.3	1,065.6	10.4	57.9
February	689.1	284.9	974.0	87.8	25.9	113.8	1,087.8	10.5	59.1
November	721.5	277.0	998.5	70.9	15.9	86.7	1,085.2	8.0	58.4
December	747.1	270.6	1,017.7	77.9	20.1	98.0	1,115.7	8.8	59.9
2000—									
January	723.7	269.0	992.6	74.6	12.9	87.5	1,080.1	8.1	58.0
February	729.8	278.1	1,007.9	72.2	23.4	95.6	1,103.6	8.7	59.2

**TABLE 18. EMPLOYED PERSONS: INDUSTRY AND OCCUPATION  
SYDNEY (MSR) AND BALANCE OF NSW (MSR), FEBRUARY 2000  
(\*000)**

<i>Industry division and Major occupation group</i>	<i>Males</i>	<i>Females</i>	<i>Persons</i>
<b>SYDNEY (MSR)</b>			
Industry—			
Agriculture, forestry and fishing	6.0	* 5.3	11.3
Mining	* 1.4	* 0.4	* 1.8
Manufacturing	166.0	77.5	243.5
Electricity, gas and water supply	9.9	* 2.6	12.4
Construction	143.2	18.7	162.0
Wholesale trade	93.3	42.8	136.1
Retail trade	125.1	133.0	258.1
Accommodation, cafes and restaurants	50.8	41.4	92.2
Transport and storage	80.6	30.6	111.1
Communication services	39.5	15.6	55.1
Finance and insurance	62.5	66.0	128.5
Property and business services	164.2	115.8	280.0
Government administration and defence	28.0	24.3	52.3
Education	27.8	82.4	110.2
Health and community services	37.9	135.8	173.8
Cultural and recreational services	34.6	29.1	63.7
Personal and other services	39.9	36.3	76.2
Occupation—			
Managers and administrators	103.4	24.8	128.2
Professionals	224.1	200.0	424.1
Associate professionals	134.5	73.9	208.4
Tradespersons and related workers	226.3	21.0	247.3
Advanced clerical and service workers	7.7	78.7	86.4
Intermediate clerical, sales and service workers	110.7	261.8	372.5
Intermediate production and transport workers	138.6	23.6	162.1
Elementary clerical, sales and service workers	60.8	117.3	178.1
Labourers and related workers	104.8	56.5	161.3
<b>Total employed</b>	<b>1,110.7</b>	<b>857.6</b>	<b>1,968.4</b>
<b>BALANCE OF NSW (MSR)</b>			
Industry—			
Agriculture, forestry and fishing	82.8	31.3	114.1
Mining	16.3	* 0.0	16.3
Manufacturing	86.2	21.8	108.0
Electricity, gas and water supply	8.5	* 1.7	10.2
Construction	72.1	9.8	81.8
Wholesale trade	34.3	8.1	42.4
Retail trade	83.3	90.9	174.1
Accommodation, cafes and restaurants	21.7	32.3	54.0
Transport and storage	27.0	6.8	33.8
Communication services	7.9	* 3.0	10.8
Finance and insurance	10.7	13.1	23.9
Property and business services	36.5	27.9	64.4
Government administration and defence	25.6	12.8	38.4
Education	23.2	48.2	71.4
Health and community services	16.6	86.3	102.9
Cultural and recreational services	11.0	10.8	21.8
Personal and other services	19.5	19.9	39.4
Occupation—			
Managers and administrators	79.8	19.6	99.4
Professionals	58.0	72.7	130.7
Associate professionals	68.5	39.8	108.2
Tradespersons and related workers	134.1	18.0	152.0
Advanced clerical and service workers	* 4.6	39.7	44.2
Intermediate clerical, sales and service workers	43.8	104.8	148.5
Intermediate production and transport workers	85.9	10.8	96.7
Elementary clerical, sales and service workers	28.5	70.1	98.6
Labourers and related workers	80.1	49.3	129.4
<b>Total employed</b>	<b>583.3</b>	<b>424.6</b>	<b>1,007.9</b>

TABLE 19. LABOUR FORCE STATUS (a), REGIONS OF NSW AND ACT

	<i>Month</i>	<i>Employed</i> ( <i>'000</i> )	<i>Unemployed</i> ( <i>'000</i> )	<i>Labour</i> <i>force</i> ( <i>'000</i> )	<i>Unemp-</i> <i>loyment</i> <i>rate</i> ( <i>per cent</i> )	<i>Partici-</i> <i>pation</i> <i>rate</i> ( <i>per cent</i> )
INNER SYDNEY AND INNER WESTERN SYDNEY (SRs)						
MALES	1999— February	111.3	4.7	116.0	4.0	70.4
	1999— December	134.5	5.6	140.1	4.0	74.3
	2000— January	133.3	5.1	138.5	3.7	74.0
	February	127.9	7.1	135.0	5.3	72.2
FEMALES	1999— February	94.3	5.2	99.5	5.2	55.9
	1999— December	116.9	4.7	121.6	3.8	63.9
	2000— January	114.7	4.5	119.2	3.7	63.7
	February	106.2	6.0	112.3	5.4	61.8
PERSONS	1999— February	205.6	9.8	215.4	4.6	62.9
	1999— December	251.4	10.3	261.7	3.9	69.1
	2000— January	248.0	9.6	257.6	3.7	68.9
	February	234.1	13.1	247.2	5.3	67.1
INNER SYDNEY (SR)						
MALES	1999— February	69.1	* 2.2	71.3	* 3.1	68.9
	1999— December	87.0	4.3	91.3	4.7	76.4
	2000— January	87.8	* 3.6	91.4	* 3.9	74.5
	February	82.3	6.4	88.6	7.2	74.4
FEMALES	1999— February	59.5	* 1.8	61.3	* 2.9	60.7
	1999— December	72.8	* 1.9	74.7	* 2.6	63.0
	2000— January	73.4	* 3.4	76.9	* 4.5	64.9
	February	66.3	4.4	70.7	6.2	63.4
PERSONS	1999— February	128.6	4.0	132.6	3.0	64.9
	1999— December	159.8	6.2	166.0	3.8	69.7
	2000— January	161.2	7.0	168.3	4.2	69.8
	February	148.6	10.8	159.3	6.7	69.1
EASTERN SUBURBS (SR)						
MALES	1999— February	67.8	2.7	70.5	3.9	74.7
	1999— December	79.8	* 1.7	81.6	* 2.1	75.3
	2000— January	69.5	2.6	72.1	3.7	71.1
	February	72.4	2.9	75.3	3.9	71.5
FEMALES	1999— February	59.8	2.6	62.4	4.2	58.5
	1999— December	54.9	3.2	58.1	5.5	57.4
	2000— January	51.3	2.8	54.1	5.2	56.1
	February	50.9	3.2	54.1	5.9	53.1
PERSONS	1999— February	127.6	5.3	132.9	4.0	66.1
	1999— December	134.8	5.0	139.7	3.5	66.6
	2000— January	120.8	5.4	126.3	4.3	63.8
	February	123.3	6.1	129.4	4.7	62.5

TABLE 19. LABOUR FORCE STATUS (a), REGIONS OF NSW AND ACT—continued

	Month	Employed ( <i>'000</i> )	Unemployed ( <i>'000</i> )	Labour force ( <i>'000</i> )	Unemp- loyment rate (per cent)	Partici- pation rate (per cent)
ST GEORGE—SUTHERLAND (SR)						
MALES	1999— February	124.7	3.8	128.5	3.0	73.5
	1999— December	125.2	4.9	130.1	3.8	75.4
	2000— January	119.5	3.2	122.7	2.6	72.5
	2000— February	120.6	2.9	123.5	2.3	73.5
FEMALES	1999— February	98.2	4.8	103.0	4.6	58.1
	1999— December	93.2	3.0	96.1	3.1	56.6
	2000— January	90.7	2.4	93.1	2.6	53.6
	2000— February	97.4	3.4	100.8	3.4	58.2
PERSONS	1999— February	222.9	8.6	231.5	3.7	65.7
	1999— December	218.4	7.9	226.3	3.5	66.1
	2000— January	210.2	5.6	215.8	2.6	62.9
	2000— February	218.0	6.3	224.3	2.8	65.7
CANTERBURY—BANKSTOWN (SR)						
MALES	1999— February	79.2	7.4	86.5	8.5	67.4
	1999— December	79.9	5.0	85.0	5.9	72.2
	2000— January	81.0	10.1	91.1	11.1	74.4
	2000— February	81.6	6.5	88.1	7.4	72.8
FEMALES	1999— February	47.6	3.7	51.3	7.2	40.3
	1999— December	63.2	3.1	66.4	4.7	52.9
	2000— January	58.1	5.0	63.1	8.0	50.5
	2000— February	58.9	4.5	63.5	7.2	49.9
PERSONS	1999— February	126.8	11.1	137.8	8.0	53.9
	1999— December	143.2	8.2	151.3	5.4	62.2
	2000— January	139.1	15.1	154.3	9.8	62.3
	2000— February	140.6	11.1	151.6	7.3	61.0
FAIRFIELD—LIVERPOOL AND OUTER SOUTH WESTERN SYDNEY (SRs)						
MALES	1999— February	144.8	16.4	161.1	10.2	76.3
	1999— December	148.7	14.6	163.4	8.9	72.4
	2000— January	144.3	16.5	160.9	10.3	73.8
	2000— February	146.0	12.1	158.1	7.7	73.2
FEMALES	1999— February	97.6	12.6	110.2	11.5	52.4
	1999— December	112.1	8.6	120.7	7.1	51.5
	2000— January	104.2	11.3	115.5	9.8	49.3
	2000— February	106.8	12.5	119.3	10.4	52.5
PERSONS	1999— February	242.4	29.0	271.4	10.7	64.4
	1999— December	260.9	23.2	284.1	8.2	61.8
	2000— January	248.5	27.9	276.4	10.1	61.1
	2000— February	252.8	24.6	277.4	8.9	62.6



TABLE 19. LABOUR FORCE STATUS (a), REGIONS OF NSW AND ACT—continued

	<i>Month</i>	<i>Employed</i> ( <i>'000</i> )	<i>Unemployed</i> ( <i>'000</i> )	<i>Labour</i> <i>force</i> ( <i>'000</i> )	<i>Unemp-</i> <i>loyment</i> <i>rate</i> ( <i>per cent</i> )	<i>Partici-</i> <i>pation</i> <i>rate</i> ( <i>per cent</i> )
FAIRFIELD—LIVERPOOL (SR)						
MALES	1999— February	79.7	11.0	90.8	12.2	73.1
	1999— December	78.3	8.1	86.4	9.4	67.0
	2000— January	77.5	9.3	86.8	10.7	70.7
	February	78.8	8.7	87.5	9.9	69.1
FEMALES	1999— February	45.7	8.2	53.8	15.2	45.8
	1999— December	61.6	5.6	67.2	8.3	48.1
	2000— January	55.0	7.3	62.3	11.6	45.2
	February	58.9	6.4	65.3	9.7	48.9
PERSONS	1999— February	125.4	19.2	144.6	13.3	59.8
	1999— December	139.9	13.7	153.6	8.9	57.2
	2000— January	132.6	16.5	149.1	11.1	57.2
	February	137.7	15.0	152.8	9.8	58.7
CENTRAL WESTERN SYDNEY (SR)						
MALES	1999— February	70.0	5.6	75.6	7.4	72.1
	1999— December	77.4	7.4	84.8	8.7	70.8
	2000— January	78.8	7.0	85.8	8.1	71.3
	February	76.8	3.7	80.5	4.6	69.5
FEMALES	1999— February	51.6	4.5	56.1	8.0	46.5
	1999— December	52.6	* 1.4	54.0	* 2.6	47.2
	2000— January	55.9	* 1.3	57.3	* 2.3	47.6
	February	52.2	* 1.7	53.8	* 3.1	46.0
PERSONS	1999— February	121.6	10.1	131.7	7.7	58.4
	1999— December	130.0	8.8	138.8	6.4	59.3
	2000— January	134.8	8.3	143.1	5.8	59.4
	February	129.0	5.4	134.4	4.0	57.7
OUTER WESTERN SYDNEY (SR) AND BLACKTOWN (C) (b)						
MALES	1999— February	155.7	11.6	167.3	6.9	77.6
	1999— December	157.9	7.1	164.9	4.3	75.5
	2000— January	164.0	10.5	174.5	6.0	75.9
	February	168.8	10.0	178.8	5.6	74.7
FEMALES	1999— February	113.3	7.6	120.9	6.3	54.2
	1999— December	122.7	6.2	128.9	4.8	56.6
	2000— January	118.4	8.4	126.8	6.6	54.3
	February	128.8	10.3	139.1	7.4	58.7
PERSONS	1999— February	269.1	19.2	288.2	6.7	65.7
	1999— December	280.5	13.3	293.8	4.5	65.9
	2000— January	282.4	18.9	301.3	6.3	65.0
	February	297.6	20.3	317.9	6.4	66.7

TABLE 19. LABOUR FORCE STATUS (a), REGIONS OF NSW AND ACT—continued

	Month	Employed ( '000)	Unemployed ( '000)	Labour force ( '000)	Unemp- loyment rate (per cent)	Partici- pation rate (per cent)
LOWER NORTHERN SYDNEY (SR)						
MALES	1999— February	75.7	* 3.1	78.8	* 4.0	69.0
	1999— December	75.1	* 1.1	76.2	* 1.4	78.1
	2000— January	74.1	* 2.8	77.0	* 3.6	75.9
	February	74.3	* 3.1	77.4	* 4.1	77.4
FEMALES	1999— February	71.0	* 3.1	74.1	* 4.2	63.0
	1999— December	60.8	3.6	64.4	5.6	55.9
	2000— January	56.5	3.2	59.7	5.4	55.8
	February	59.3	3.9	63.2	6.1	55.5
PERSONS	1999— February	146.7	6.3	153.0	4.1	65.9
	1999— December	135.9	4.7	140.5	3.3	66.1
	2000— January	130.6	6.0	136.6	4.4	65.6
	February	133.5	7.0	140.6	5.0	65.7
HORNSBY—KU-RING-GAI (SR) AND BAULKHAM HILLS (A) (b)						
MALES	1999— February	120.8	4.0	124.8	3.2	77.2
	1999— December	117.8	4.1	121.9	3.4	79.1
	2000— January	110.8	3.3	114.1	2.9	75.4
	February	117.4	* 2.1	119.5	* 1.7	78.7
FEMALES	1999— February	95.4	5.1	100.5	5.0	59.1
	1999— December	99.1	* 2.7	101.7	* 2.6	60.3
	2000— January	93.9	* 2.4	96.3	* 2.5	58.4
	February	100.5	6.1	106.6	5.8	61.3
PERSONS	1999— February	216.2	9.1	225.2	4.0	67.9
	1999— December	216.9	6.8	223.6	3.0	69.3
	2000— January	204.7	5.7	210.4	2.7	66.6
	February	217.9	8.2	226.1	3.6	69.4
NORTHERN BEACHES (SR)						
MALES	1999— February	71.8	* 1.7	73.6	* 2.3	77.6
	1999— December	67.4	* 1.4	68.8	* 2.0	78.4
	2000— January	66.5	* 2.2	68.6	* 3.2	76.0
	February	67.3	* 2.5	69.7	* 3.6	75.2
FEMALES	1999— February	51.9	* 1.7	53.6	* 3.2	57.7
	1999— December	57.1	* 1.3	58.4	* 2.3	60.9
	2000— January	58.0	* 2.4	60.4	* 3.9	59.2
	February	58.5	* 1.3	59.8	* 2.2	60.2
PERSONS	1999— February	123.7	3.4	127.2	2.7	67.8
	1999— December	124.4	* 2.7	127.2	* 2.1	69.2
	2000— January	124.5	4.5	129.0	3.5	67.1
	February	125.8	3.8	129.5	2.9	67.5

TABLE 19. LABOUR FORCE STATUS (a), REGIONS OF NSW AND ACT—continued

	<i>Month</i>	<i>Employed</i> ( '000)	<i>Unemployed</i> ( '000)	<i>Labour</i> <i>force</i> ( '000)	<i>Unemp-</i> <i>loyment</i> <i>rate</i> (per cent)	<i>Partici-</i> <i>pation</i> <i>rate</i> (per cent)
GOSFORD—WYONG (SR)						
MALES	1999— February	59.2	8.7	67.8	12.8	63.7
	1999— December	62.6	4.5	67.1	6.7	64.4
	2000— January	58.9	3.5	62.4	5.5	59.1
	February	57.7	5.6	63.3	8.8	62.1
FEMALES	1999— February	45.6	3.2	48.8	6.5	43.7
	1999— December	41.4	3.7	45.1	8.2	39.8
	2000— January	42.1	2.6	44.8	5.9	39.3
	February	38.2	4.9	43.1	11.4	40.2
PERSONS	1999— February	104.8	11.8	116.7	10.2	53.5
	1999— December	104.0	8.1	112.1	7.3	51.6
	2000— January	101.0	6.1	107.1	5.7	48.8
	February	95.9	10.5	106.4	9.9	50.9
HUNTER (SR)						
MALES	1999— February	129.4	15.8	145.1	10.9	69.4
	1999— December	148.4	17.9	166.3	10.8	70.1
	2000— January	140.8	16.2	156.9	10.3	68.1
	February	142.7	17.5	160.2	10.9	68.4
FEMALES	1999— February	98.5	13.5	112.0	12.0	48.3
	1999— December	112.3	11.9	124.2	9.6	51.2
	2000— January	105.4	10.2	115.6	8.8	48.5
	February	107.2	8.9	116.1	7.6	48.7
PERSONS	1999— February	227.9	29.2	257.1	11.4	58.3
	1999— December	260.7	29.8	290.5	10.3	60.6
	2000— January	246.2	26.4	272.5	9.7	58.1
	February	249.9	26.4	276.3	9.5	58.5
NEWCASTLE (SRS)						
MALES	1999— February	106.0	13.6	119.5	11.4	69.5
	1999— December	129.6	16.5	146.1	11.3	71.0
	2000— January	123.6	15.0	138.6	10.8	69.5
	February	123.5	16.1	139.6	11.5	69.2
FEMALES	1999— February	80.1	9.9	90.0	11.0	48.2
	1999— December	99.2	9.5	108.7	8.7	52.7
	2000— January	91.7	8.0	99.7	8.0	49.3
	February	93.5	7.5	101.0	7.5	50.0
PERSONS	1999— February	186.1	23.5	209.5	11.2	58.4
	1999— December	228.8	26.0	254.8	10.2	61.8
	2000— January	215.3	23.0	238.3	9.6	59.3
	February	217.0	23.6	240.6	9.8	59.6

TABLE 19. LABOUR FORCE STATUS (a), REGIONS OF NSW AND ACT—continued

	<i>Month</i>	<i>Employed</i> ( '000)	<i>Unemployed</i> ( '000)	<i>Labour force</i> ( '000)	<i>Unemployment rate</i> (per cent)	<i>Participation rate</i> (per cent)
ILLAWARRA AND SOUTH EASTERN (SRs) (c)						
MALES	1999— February	135.7	12.5	148.2	8.4	66.5
	1999— December	141.2	15.8	156.9	10.0	69.4
	2000— January	147.9	14.1	162.0	8.7	69.8
	February	144.4	13.0	157.4	8.2	68.3
FEMALES	1999— February	102.7	11.9	114.6	10.4	51.2
	1999— December	100.2	7.5	107.7	7.0	49.9
	2000— January	100.6	7.2	107.8	6.6	47.0
	February	98.8	7.7	106.4	7.2	46.9
PERSONS	1999— February	238.4	24.4	262.8	9.3	58.9
	1999— December	241.4	23.3	264.6	8.8	59.8
	2000— January	248.6	21.2	269.8	7.9	58.4
	February	243.2	20.6	263.8	7.8	57.7
ILLAWARRA (SR)						
MALES	1999— February	86.8	8.5	95.3	8.9	65.4
	1999— December	95.3	10.7	106.0	10.1	67.7
	2000— January	96.8	8.7	105.4	8.2	67.4
	February	97.1	9.1	106.2	8.6	66.5
FEMALES	1999— February	65.5	8.9	74.4	11.9	50.1
	1999— December	69.7	* 3.5	73.2	* 4.8	47.8
	2000— January	66.7	* 2.7	69.4	* 4.0	43.3
	February	66.0	4.9	70.9	6.9	45.2
PERSONS	1999— February	152.3	17.3	169.7	10.2	57.7
	1999— December	165.0	14.2	179.2	7.9	57.8
	2000— January	163.4	11.4	174.8	6.5	55.2
	February	163.1	14.0	177.0	7.9	55.9
WOLLONGONG (SRS)						
MALES	1999— February	62.9	6.0	68.9	8.7	67.1
	1999— December	71.5	7.0	78.5	8.9	70.5
	2000— January	73.4	4.5	77.9	5.8	70.2
	February	70.9	5.5	76.4	7.2	69.5
FEMALES	1999— February	45.2	6.5	51.7	12.5	50.2
	1999— December	50.5	3.5	54.0	6.5	52.3
	2000— January	49.0	* 2.1	51.1	* 4.1	46.4
	February	46.9	4.1	51.0	8.0	47.2
PERSONS	1999— February	108.1	12.4	120.6	10.3	58.7
	1999— December	122.0	10.5	132.5	7.9	61.7
	2000— January	122.4	6.6	129.0	5.1	58.4
	February	117.8	9.6	127.4	7.5	58.5

TABLE 19. LABOUR FORCE STATUS (a), REGIONS OF NSW AND ACT—continued

	Month	Employed ( <i>'000</i> )	Unemployed ( <i>'000</i> )	Labour force ( <i>'000</i> )	Unemp- loyment rate (per cent)	Partici- pation rate (per cent)
RICHMOND—TWEED AND MID-NORTH COAST (SRs)						
MALES	1999— February	97.8	18.6	116.4	16.0	63.0
	1999— December	99.3	13.6	112.9	12.0	61.5
	2000— January	98.5	13.3	111.8	11.9	60.0
	February	100.2	12.9	113.2	11.4	63.8
FEMALES	1999— February	70.4	12.0	82.4	14.6	43.8
	1999— December	81.7	10.2	91.9	11.1	45.6
	2000— January	82.1	8.3	90.3	9.1	44.8
	February	82.7	13.7	96.4	14.2	49.0
PERSONS	1999— February	168.2	30.6	198.8	15.4	53.3
	1999— December	180.9	23.8	204.8	11.6	53.2
	2000— January	180.6	21.6	202.1	10.7	52.1
	February	182.9	26.6	209.6	12.7	56.0
NORTHERN, FAR WEST—NORTH WESTERN AND CENTRAL WEST (SRs) (d)						
MALES	1999— February	133.9	10.7	144.6	7.4	74.8
	1999— December	121.6	7.6	129.2	5.9	73.8
	2000— January	117.7	6.6	124.3	5.3	71.1
	February	127.8	8.1	135.8	6.0	72.9
FEMALES	1999— February	87.3	8.1	95.4	8.5	52.0
	1999— December	91.5	5.3	96.9	5.5	53.2
	2000— January	80.6	6.1	86.8	7.1	49.8
	February	90.0	8.0	98.1	8.2	52.9
PERSONS	1999— February	221.2	18.8	240.1	7.8	63.7
	1999— December	213.2	12.9	226.1	5.7	63.3
	2000— January	198.3	12.7	211.0	6.0	60.5
	February	217.8	16.1	233.9	6.9	62.9
MURRAY—MURRUMBIDGEE (SR)						
MALES	1999— February	67.3	5.8	73.1	7.9	73.7
	1999— December	74.2	* 3.8	78.0	* 4.8	79.9
	2000— January	74.5	* 3.0	77.4	* 3.9	79.7
	February	68.2	* 3.8	72.0	* 5.2	77.2
FEMALES	1999— February	51.1	* 4.9	56.0	* 8.7	53.3
	1999— December	47.3	* 4.4	51.8	* 8.6	51.9
	2000— January	44.6	* 2.6	47.2	* 5.5	47.9
	February	45.9	* 2.1	48.0	* 4.4	49.9
PERSONS	1999— February	118.4	10.7	129.1	8.3	63.2
	1999— December	121.5	8.2	129.7	6.3	65.7
	2000— January	119.1	* 5.6	124.7	* 4.5	63.7
	February	114.1	5.9	120.0	4.9	63.3

TABLE 19. LABOUR FORCE STATUS (a), REGIONS OF NSW AND ACT—continued

	<i>Month</i>	<i>Employed</i> ( <i>'000</i> )	<i>Unemployed</i> ( <i>'000</i> )	<i>Labour</i> <i>force</i> ( <i>'000</i> )	<i>Unemp-</i> <i>loyment</i> <i>rate</i> ( <i>per cent</i> )	<i>Partici-</i> <i>pation</i> <i>rate</i> ( <i>per cent</i> )
AUSTRALIAN CAPITAL TERRITORY AND SOUTH EASTERN (SRs) (c)						
MALES	1999— February	131.0	10.2	141.1	7.2	73.7
	1999— December	131.4	10.3	141.7	7.3	76.5
	2000— January	136.1	12.0	148.1	8.1	77.2
	February	134.3	9.2	143.6	6.4	76.6
	FEMALES	1999— February	112.6	8.5	121.1	7.0
	1999— December	109.6	7.7	117.3	6.6	63.2
	2000— January	111.2	8.3	119.5	7.0	62.2
	February	111.9	7.8	119.7	6.5	62.0
PERSONS	1999— February	243.5	18.7	262.2	7.1	67.6
	1999— December	241.0	18.0	259.1	7.0	69.9
	2000— January	247.3	20.3	267.6	7.6	69.7
	February	246.2	17.0	263.2	6.5	69.2

(a) While the Labour Force Survey is designed primarily to produce reliable estimates at the national and State/Territory level, it also delivers estimates for a number of regions within States. As with national and State estimates, regional labour force estimates are subject to sampling error. Since estimates for regions are components of corresponding estimates at the State level — and are thus based on a considerably smaller sample size — they are subject to higher relative standard error. Care should therefore be taken in interpretation of regional estimates, particularly month to month movements. Tables of standard errors are included in the Technical Note on pages 59-64 of this publication. Regional estimates from September 1997 onward may not be directly comparable with those before September 1997 because a new sample has been selected which may have different characteristics to the old. (b) New region from September 1997. (c) Estimates for the South Eastern (SR) are not published separately. Data for the South Eastern (SR) are included in ACT and South Eastern (SRs) and in Illawarra and South Eastern (SRs). (d) From September 1997 includes Far West Statistical Division, previously excluded. Break in the series from September 1997.

TABLE 20. LABOUR FORCE STATUS: ORIGINAL SERIES, ACT

Month	Employed			Unemployed			Labour force ('000)	Not in labour force ('000)	Civilian population aged 15 and over ('000)	Unemployment rate (per cent)	Participation rate (per cent)
	Full-time workers ('000)	Part-time workers ('000)	Total ('000)	Looking for full-time work ('000)	Looking for part-time work ('000)	Total ('000)					
MALES											
February—											
1996	70.8	10.1	81.0	5.7	1.6	7.3	88.3	22.6	110.8	8.3	79.7
1997	68.4	10.5	78.9	5.9	2.6	8.5	87.4	24.2	111.6	9.8	78.3
1998	70.2	10.2	80.4	7.1	1.0	8.1	88.5	24.1	112.5	9.1	78.6
1998—											
December	70.4	12.0	82.4	4.4	1.5	5.9	88.3	25.6	113.9	6.7	77.5
1999—											
January	69.8	10.7	80.5	4.8	1.2	6.1	86.6	27.5	114.1	7.0	75.9
February	69.8	12.3	82.0	4.6	1.5	6.1	88.2	26.1	114.3	6.9	77.2
November	71.1	14.9	86.0	4.2	* 1.0	5.2	91.2	24.3	115.5	5.7	78.9
December	71.5	14.0	85.5	4.4	* 0.9	5.3	90.8	24.9	115.7	5.8	78.5
2000—											
January	72.5	12.5	84.9	5.1	1.4	6.6	91.5	24.6	116.1	7.2	78.8
February	73.2	13.8	86.9	4.2	1.2	5.4	92.3	24.3	116.6	5.8	79.2
MARRIED FEMALES											
February—											
1996	27.3	17.6	45.0	1.2	1.1	2.3	47.3	20.8	68.0	4.8	69.5
1997	27.1	15.0	42.1	1.9	1.1	3.0	45.1	22.9	68.0	6.7	66.3
1998	27.4	15.0	42.4	* 0.9	1.2	2.1	44.6	22.8	67.3	4.8	66.2
1998—											
December	26.9	14.3	41.2	* 0.4	* 0.5	* 0.9	42.1	24.5	66.6	* 2.1	63.2
1999—											
January	25.2	15.7	40.9	* 0.6	* 0.6	1.2	42.1	25.8	67.9	2.9	62.0
February	26.6	16.2	42.8	* 0.6	* 0.9	1.5	44.3	23.3	67.6	3.3	65.5
November	28.7	16.0	44.6	1.2	* 0.7	2.0	46.6	20.4	67.0	4.2	69.6
December	28.5	17.1	45.6	* 0.9	* 0.7	1.6	47.3	19.5	66.8	3.5	70.8
2000—											
January	27.4	16.2	43.6	1.1	* 0.5	1.5	45.1	21.1	66.2	3.4	68.1
February	29.0	15.4	44.4	* 0.7	* 0.9	1.6	46.0	19.5	65.5	3.5	70.2
ALL FEMALES											
February—											
1996	45.1	28.4	73.5	4.0	3.6	7.6	81.1	38.8	119.9	9.4	67.6
1997	45.7	27.8	73.4	4.2	2.4	6.6	80.1	40.7	120.8	8.3	66.3
1998	46.9	26.9	73.8	3.2	3.0	6.3	80.0	40.9	121.0	7.8	66.2
1998—											
December	49.0	26.6	75.6	1.7	2.1	3.8	79.4	42.1	121.5	4.8	65.4
1999—											
January	46.5	26.2	72.8	2.8	1.9	4.7	77.5	44.1	121.6	6.1	63.8
February	48.1	27.3	75.5	2.5	3.0	5.5	81.0	40.7	121.7	6.8	66.5
November	50.2	27.1	77.3	2.4	2.2	4.6	81.8	40.7	122.6	5.6	66.8
December	50.9	28.2	79.1	2.2	1.5	3.7	82.8	39.8	122.7	4.5	67.5
2000—											
January	50.4	26.9	77.3	2.6	1.3	3.9	81.2	41.7	122.9	4.8	66.1
February	53.5	25.6	79.1	2.4	2.6	5.0	84.1	38.9	123.1	5.9	68.4
PERSONS											
February—											
1996	115.9	38.5	154.4	9.7	5.2	14.9	169.4	61.3	230.7	8.8	73.4
1997	114.1	38.3	152.3	10.1	5.1	15.2	167.5	64.9	232.5	9.1	72.1
1998	117.1	37.1	154.2	10.4	4.0	14.3	168.5	65.0	233.5	8.5	72.2
1998—											
December	119.5	38.6	158.1	6.0	3.7	9.7	167.8	67.6	235.4	5.8	71.3
1999—											
January	116.3	36.9	153.2	7.6	3.2	10.8	164.1	71.6	235.7	6.6	69.6
February	117.9	39.6	157.5	7.2	4.5	11.6	169.1	66.8	235.9	6.9	71.7
November	121.3	42.0	163.3	6.6	3.2	9.8	173.0	65.1	238.1	5.6	72.7
December	122.4	42.2	164.7	6.6	2.4	9.0	173.6	64.7	238.3	5.2	72.9
2000—											
January	122.9	39.3	162.2	7.7	2.8	10.5	172.7	66.3	239.0	6.1	72.3
February	126.7	39.4	166.1	6.6	3.7	10.3	176.4	63.2	239.6	5.9	73.6

TABLE 21. LABOUR FORCE STATUS: TREND SERIES (a), ACT

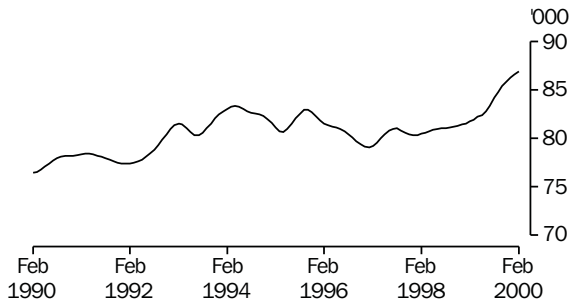
Month	Employed ( <i>'000</i> )	Unemployed ( <i>'000</i> )	Labour force ( <i>'000</i> )	Unemployment rate (per cent)	Participation rate (per cent)
MALES					
<i>February—</i>					
1996	81.6	7.2	88.8	8.1	80.1
1997	79.3	7.5	86.8	8.6	77.7
1998	80.5	7.1	87.6	8.1	77.8
<i>1998—</i>					
December	81.5	6.1	87.6	7.0	76.9
<i>1999—</i>					
January	81.6	5.9	87.6	6.8	76.8
February	81.8	5.9	87.7	6.7	76.7
March	82.0	5.8	87.8	6.6	76.7
April	82.1	5.8	88.0	6.6	76.8
May	82.4	5.9	88.3	6.7	77.0
June	82.8	5.9	88.7	6.7	77.3
July	83.4	5.9	89.3	6.6	77.7
August	84.2	5.8	89.9	6.4	78.2
September	84.8	5.7	90.5	6.3	78.6
October	85.4	5.6	91.0	6.2	78.9
November	85.9	5.5	91.5	6.0	79.1
December	86.3	5.4	91.8	5.9	79.2
<i>2000—</i>					
January	86.6	5.3	92.0	5.8	79.2
February	86.9	5.3	92.1	5.7	79.2
FEMALES					
<i>February—</i>					
1996	74.1	6.1	80.3	7.6	67.0
1997	73.6	5.2	78.8	6.6	65.2
1998	72.9	5.2	78.1	6.7	64.6
<i>1998—</i>					
December	74.4	4.1	78.5	5.2	64.6
<i>1999—</i>					
January	74.8	4.1	79.0	5.2	65.0
February	75.1	4.2	79.3	5.3	65.2
March	75.2	4.3	79.5	5.4	65.3
April	75.3	4.2	79.5	5.2	65.2
May	75.7	4.0	79.7	5.0	65.3
June	76.2	3.8	80.0	4.8	65.6
July	76.8	3.8	80.6	4.7	66.0
August	77.4	3.9	81.3	4.8	66.5
September	77.9	4.1	81.9	5.0	67.0
October	78.2	4.2	82.4	5.1	67.3
November	78.5	4.2	82.7	5.1	67.5
December	78.7	4.2	82.9	5.1	67.6
<i>2000—</i>					
January	79.0	4.1	83.1	4.9	67.6
February	79.1	4.0	83.1	4.8	67.6
PERSONS					
<i>February—</i>					
1996	155.7	13.3	169.0	7.9	73.3
1997	152.9	12.7	165.6	7.7	71.2
1998	153.4	12.3	165.7	7.4	71.0
<i>1998—</i>					
December	155.9	10.2	166.1	6.1	70.6
<i>1999—</i>					
January	156.5	10.1	166.6	6.1	70.7
February	156.9	10.1	167.0	6.0	70.8
March	157.2	10.1	167.3	6.0	70.8
April	157.5	10.0	167.5	6.0	70.9
May	158.0	9.9	167.9	5.9	71.0
June	159.0	9.8	168.8	5.8	71.3
July	160.3	9.7	169.9	5.7	71.7
August	161.6	9.7	171.2	5.7	72.2
September	162.7	9.8	172.5	5.7	72.6
October	163.6	9.8	173.5	5.7	72.9
November	164.4	9.8	174.2	5.6	73.1
December	165.0	9.6	174.7	5.5	73.2
<i>2000—</i>					
January	165.6	9.4	175.0	5.4	73.3
February	166.0	9.2	175.2	5.3	73.3

(a) See Explanatory Notes 29 and 30.

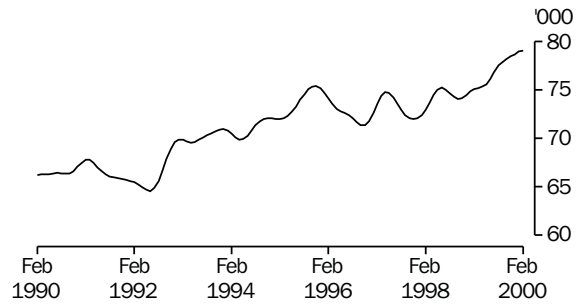


TREND SERIES, ACT(a)

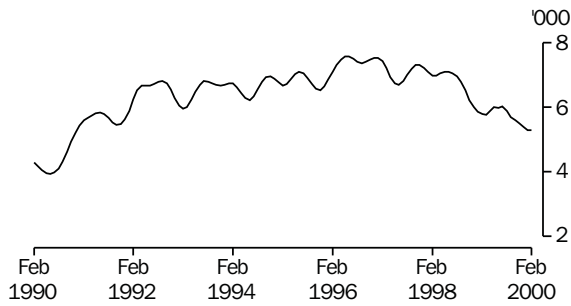
EMPLOYED MALES



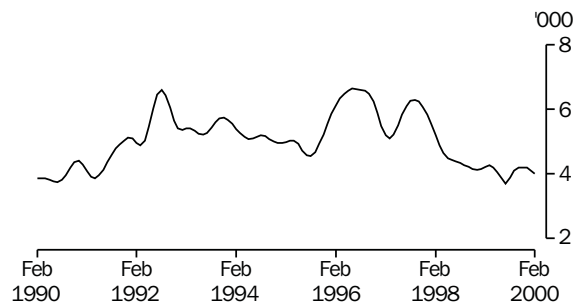
EMPLOYED FEMALES



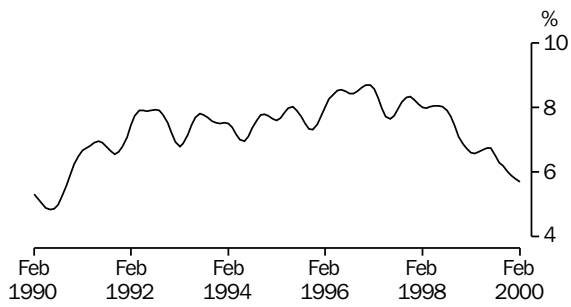
UNEMPLOYED MALES



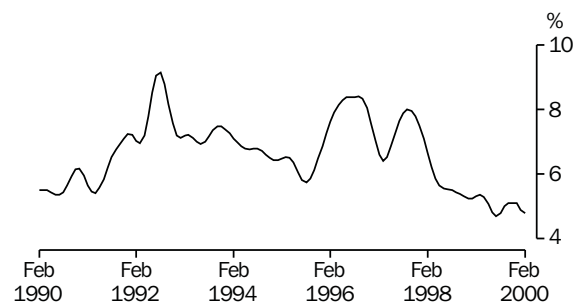
UNEMPLOYED FEMALES



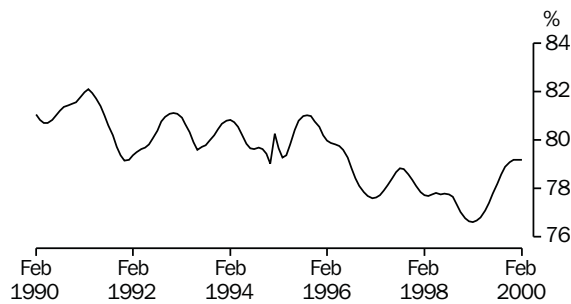
MALE UNEMPLOYMENT RATE



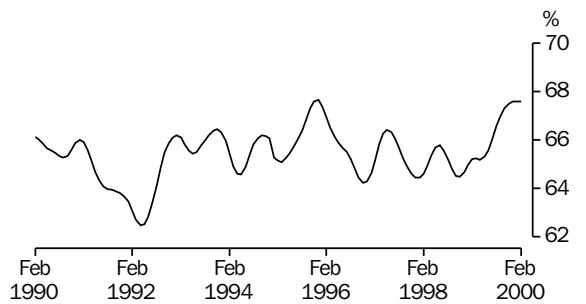
FEMALE UNEMPLOYMENT RATE



MALE PARTICIPATION RATE



FEMALE PARTICIPATION RATE



(a) Comparisons between these graphs should not be made, as their vertical axes are not similarly scaled.

**TABLE 22. LABOUR FORCE STATUS: AGE, ACT, FEBRUARY 2000**

	Persons						
	Females			Age group (years)			Total
	Males	Married	Total	15-19	20-24	25 and over	
	— '000 —						
<i>Employed</i>	86.9	44.4	79.1	11.8	21.9	132.3	166.1
Full-time workers	73.2	29.0	53.5	3.7	16.1	106.9	126.7
Part-time workers	13.8	15.4	25.6	8.1	5.8	25.5	39.4
<i>Unemployed</i>	5.4	1.6	5.0	2.9	1.4	6.0	10.3
Looking for full-time work	4.2	* 0.7	2.4	1.3	1.1	4.2	6.6
Looking for part-time work	1.2	* 0.9	2.6	1.6	* 0.3	1.8	3.7
<i>Labour force</i>	92.3	46.0	84.1	14.8	23.3	138.3	176.4
Not in labour force	24.3	19.5	38.9	8.7	2.9	51.6	63.2
Aged 15-19 attending school	3.9	* 0.2	2.9	6.8	..	..	6.8
<i>Civilian population</i>	116.6	65.5	123.1	23.5	26.2	189.9	239.6
	— per cent —						
Unemployment rate	5.8	3.5	5.9	19.9	6.0	4.3	5.9
Looking for full-time work	5.4	* 2.4	4.3	25.8	6.2	3.8	5.0
Participation rate	79.2	70.2	68.4	62.9	88.8	72.8	73.6
Employment/population ratio	74.6	67.7	64.3	50.4	83.5	69.7	69.3
	— number —						
Average weekly hours worked							
by employed persons	38.2	29.7	30.5	19.1	32.8	36.2	34.5
Average duration of unemployment (weeks)	41.4	44.5	28.1	14.7	* 24.3	47.5	35.0

**TABLE 23. NON-INSTITUTIONALISED PERSONS(a): LABOUR FORCE STATUS, BIRTHPLACE AND YEAR OF ARRIVAL, ACT, FEBRUARY 2000 ('000)**

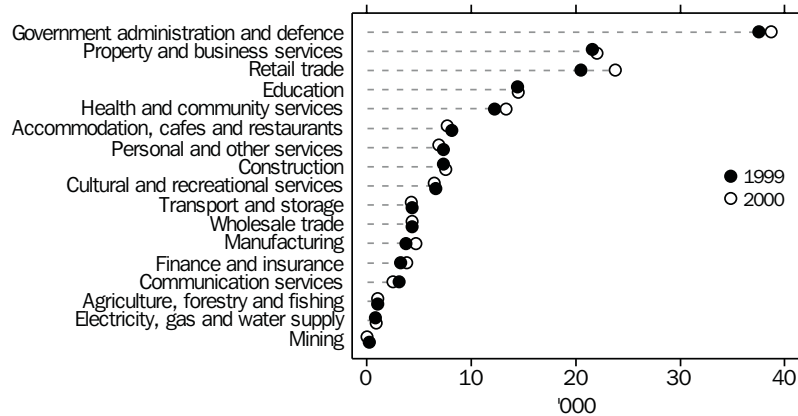
	Employed	Unemployed	Not in labour force	Labour force	Civilian population aged 15 and over
<i>Born in Australia</i>	126.6	7.5	40.9	134.2	175.0
<i>Born outside Australia</i>	39.4	2.8	22.3	42.3	64.6
Arrived before 1966	9.8	* 0.7	11.2	10.5	21.7
Arrived 1966-1970	5.3	* 0.2	2.9	5.5	8.4
Arrived 1971-1975	5.5	* 0.3	1.4	5.7	7.2
Arrived 1976-1980	4.4	* 0.2	1.2	4.6	5.8
Arrived 1981-1985	4.5	* 0.5	* 0.9	5.0	5.8
Arrived 1986-1990	4.7	* 0.7	2.4	5.4	7.8
Arrived 1991-1995	3.1	* 0.2	* 1.0	3.3	4.3
Arrived 1991 to survey date	5.0	* 0.3	2.5	5.3	7.7
<i>Main English speaking countries</i>	15.6	* 0.7	7.7	16.3	24.0
Arrived before 1966	2.8	* 0.1	4.5	2.9	7.4
Arrived 1966-1970	2.5	* 0.0	1.3	2.5	3.8
Arrived 1971-1975	2.8	* 0.2	* 0.6	3.0	3.6
Arrived 1976-1980	2.5	* 0.2	* 0.3	2.7	3.0
Arrived 1981-1985	1.8	* 0.2	* 0.3	2.0	2.3
Arrived 1986-1990	1.3	* 0.1	* 0.6	1.4	1.9
Arrived 1991-1995	* 0.9	* 0.0	* 0.1	* 0.9	* 1.0
Arrived 1991 to survey date	1.6	* 0.0	* 0.2	1.6	1.7
<i>Other than Main English speaking countries</i>	23.8	2.1	14.6	25.9	40.6
Arrived before 1966	7.0	* 0.6	6.6	7.6	14.3
Arrived 1966-1970	2.8	* 0.2	1.6	3.0	4.6
Arrived 1971-1975	2.6	* 0.1	* 0.9	2.7	3.6
Arrived 1976-1980	1.9	* 0.0	* 0.9	1.9	2.8
Arrived 1981-1985	2.7	* 0.3	* 0.5	3.0	3.5
Arrived 1986-1990	<b>3.4</b>	<b>* 0.6</b>	<b>1.8</b>	<b>4.0</b>	<b>5.8</b>
Arrived 1991-1995	2.2	* 0.2	* 0.9	2.4	3.3
Arrived 1991 to survey date	3.4	* 0.3	2.3	3.7	6.0
<b>Total</b>	166.1	10.3	63.2	176.4	239.6

(a) Excludes boarding school pupils.

**TABLE 24. EMPLOYED PERSONS: INDUSTRY, ACT  
(<sup>'000</sup>)**

Industry division	Average for year ending					
	February 1999			February 2000		
	Males	Females	Persons	Males	Females	Persons
Industry—						
Agriculture, forestry and fishing	* 0.7	* 0.4	* 1.0	* 0.7	* 0.3	* 1.0
Mining	* 0.2	* 0.0	* 0.2	* 0.0	* 0.0	* 0.0
Manufacturing	2.5	1.3	3.7	3.3	1.4	4.7
Electricity, gas and water supply	* 0.6	* 0.2	* 0.8	* 0.6	* 0.2	* 0.9
Construction	6.2	1.1	7.3	6.7	* 0.8	7.5
Wholesale trade	3.2	1.1	4.3	2.8	1.4	4.3
Retail trade	10.5	10.0	20.5	12.8	11.0	23.8
Accommodation, cafes and restaurants	4.0	4.1	8.1	3.5	4.1	7.7
Transport and storage	3.1	1.2	4.3	3.2	* 1.0	4.2
Communication services	1.8	1.2	3.1	1.5	* 1.0	2.5
Finance and insurance	* 1.0	2.2	3.2	1.7	2.1	3.8
Property and business services	12.2	9.4	21.6	12.8	9.2	22.0
Government administration and defence	20.4	17.1	37.5	19.9	18.8	38.7
Education	5.3	9.1	14.4	5.8	8.7	14.5
Health and community services	2.3	9.9	12.2	2.6	10.6	13.3
Cultural and recreational services	3.4	3.2	6.6	3.5	2.9	6.4
Personal and other services	4.0	3.3	7.3	3.4	3.5	6.9
<b>Total employed</b>	<b>81.2</b>	<b>74.8</b>	<b>156.0</b>	<b>84.8</b>	<b>77.4</b>	<b>162.2</b>

AVERAGE EMPLOYMENT BY INDUSTRY DIVISION, ACT, YEAR ENDING FEBRUARY



**TABLE 25. EMPLOYED PERSONS: OCCUPATION, ACT  
(\*000)**

Major occupation group	Average for year ending					
	February 1999			February 2000		
	Males	Females	Persons	Males	Females	Persons
Occupation—						
Managers and administrators	9.3	4.3	13.5	10.3	3.9	14.3
Professionals	19.0	18.1	37.0	22.0	20.0	42.0
Associate professionals	13.7	10.0	23.7	13.3	10.6	23.9
Tradespersons and related workers	11.9	1.5	13.4	12.4	1.6	14.0
Advanced clerical and service workers	* 0.5	5.0	5.6	* 0.5	5.2	5.7
Intermediate clerical, sales and service workers	9.0	21.0	30.0	9.1	22.5	31.7
Intermediate production and transport workers	4.5	* 0.3	4.8	5.3	* 0.7	6.0
Elementary clerical, sales and service workers	8.4	11.9	20.3	6.9	10.1	17.0
Labourers and related workers	4.9	2.8	7.7	4.8	2.7	7.6
<b>Total employed</b>	<b>81.2</b>	<b>74.8</b>	<b>156.0</b>	<b>84.8</b>	<b>77.4</b>	<b>162.2</b>

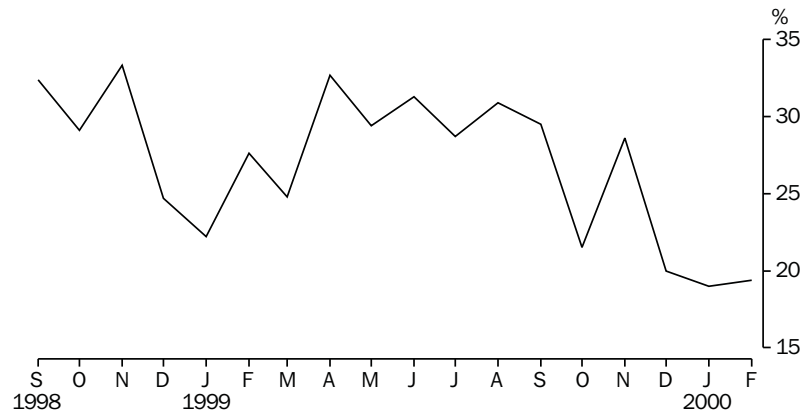
AVERAGE EMPLOYMENT BY OCCUPATION GROUP, ACT, YEAR ENDING FEBRUARY



**TABLE 26. LONG-TERM UNEMPLOYMENT, ACT**

Month	Long-term unemployment									Long-term unemployment as a proportion of total unemployment		
	52 weeks and under 104			104 weeks and over			Total			Males (per cent)	Females (per cent)	Persons (per cent)
	Males (‘000)	Females (‘000)	Persons (‘000)	Males (‘000)	Females (‘000)	Persons (‘000)	Males (‘000)	Females (‘000)	Persons (‘000)			
<i>1998—</i>												
December	1.2	* 0.2	1.4	* 0.6	* 0.3	* 0.9	1.9	* 0.5	2.4	32.2	13.2	24.7
<i>1999—</i>												
January	* 1.0	* 0.3	1.3	* 0.9	* 0.3	1.1	1.8	* 0.5	2.4	29.5	10.6	22.2
February	1.1	* 0.6	1.7	1.1	* 0.3	1.5	2.2	* 1.0	3.2	36.1	18.2	27.6
March	1.2	* 0.8	2.1	* 0.5	* 0.3	* 0.8	1.8	1.1	2.9	27.7	21.6	24.8
April	1.5	* 0.3	1.9	* 0.8	* 0.5	1.3	2.4	* 0.8	3.2	38.7	22.2	32.7
May	* 0.9	* 0.6	1.5	* 0.7	* 0.7	1.4	1.6	1.3	3.0	27.6	29.5	29.4
June	* 0.8	* 0.3	1.1	* 0.9	* 0.6	1.5	1.7	* 1.0	2.6	36.2	27.8	31.3
July	* 0.7	* 0.3	* 1.0	1.1	* 0.4	1.5	1.8	* 0.7	2.5	30.5	25.0	28.7
August	* 0.8	* 0.4	1.2	1.4	* 0.5	1.8	2.1	* 0.8	3.0	33.3	23.5	30.9
September	* 0.6	* 0.3	* 0.9	1.3	* 0.5	1.9	1.9	* 0.9	2.8	33.3	23.7	29.5
October	* 0.4	* 0.3	* 0.7	* 0.9	* 0.5	1.3	1.3	* 0.8	2.0	27.7	17.4	21.5
November	* 0.7	* 0.5	1.2	1.1	* 0.5	1.6	1.8	* 1.0	2.8	34.6	21.7	28.6
December	* 0.4	* 0.3	* 0.7	* 0.9	* 0.2	1.1	1.3	* 0.5	1.8	24.5	13.5	20.0
<i>2000—</i>												
January	* 0.2	* 0.4	* 0.6	* 1.0	* 0.4	1.4	1.2	* 0.8	2.0	18.2	20.5	19.0
February	* 0.2	* 0.5	* 0.7	* 1.0	* 0.3	1.3	1.2	* 0.7	2.0	22.2	14.0	19.4

LONG-TERM UNEMPLOYED AS A PROPORTION OF TOTAL UNEMPLOYED, ACT





## DEFINITIONS

**8** The labour force category to which a person is assigned depends on the actual activity undertaken during the reference week (i.e. whether working, looking for work, etc.). The following definitions, which conform closely to the international standard definitions specified by the International Labour Office (ILO), relate only to those persons within the scope of the survey.

**9** *Employed persons* comprise civilians aged 15 years and over who, during the reference week:

- worked for one hour or more for pay, profit, commission or payment in kind (including employees, employers and own account workers) in a job or business, or on a farm; or
- worked for one hour or more without pay in a family business or on a farm (i.e. contributing family workers); or
- were employees who had a job but were not at work and were: on paid leave; on leave without pay for less than four weeks up to the end of the reference week; stood down without pay because of bad weather or plant breakdown at their place of employment for less than four weeks up to the end of the reference week; on strike or locked out; on workers' compensation and expected to be returning to their job; or receiving wages or salary while undertaking full-time study; or
- were employers, own account workers or contributing family workers who had a job, business or farm, but were not at work.

**10** Prior to April 1986, contributing family workers who worked for 1–14 hours were excluded from the category of employed persons.

**11** Employed persons can be classified into:

- *full-time workers*, i.e. those who usually worked 35 hours or more a week (in all jobs) and those who, although usually part-time workers, worked 35 hours or more during the reference week; and
- *part-time workers*, i.e. those who usually worked less than 35 hours a week and who did so during the reference week.

**12** *Unemployed persons* are those aged 15 years and over who were not employed during the reference week, and:

- had actively looked for full-time or part-time work at any time in the four weeks up to the end of the reference week, and:
  - were available for work in the reference week, or would have been available except for temporary illness (i.e. lasting for less than four weeks to the end of the reference week); or
  - were waiting to start a new job within four weeks from the end of the reference week and would have started in the reference week if the job had been available then; or

- were waiting to be called back to a full-time or part-time job from which they had been stood down without pay for less than four weeks up to the end of the reference week (including the whole of the reference week) for reasons other than bad weather or plant breakdown.

**13** *Actively looking for work* includes writing, telephoning or applying in person to an employer for work; answering an advertisement for a job; checking factory notice-boards or the touchscreens at the Centrelink offices; being registered with Centrelink as a jobseeker; checking or registering with any other employment agency; advertising or tendering for work; and contacting friends or relatives.

**14** *The unemployment rate* for any group is the number of unemployed persons expressed as a percentage of the labour force in the same group.

**15** The *labour force* comprises persons who were employed or unemployed as defined above.

**16** *Long-term unemployed* comprises persons unemployed for a period of 52 weeks or more.

**17** *Persons not in the labour force* are those who, during the reference week, were not in the categories employed or unemployed as defined above.

**18** *The participation rate* for any group is the labour force expressed as a percentage of the civilian population aged 15 years and over in the same group.

**19** *Duration of unemployment* is the period from the time the person began looking for work or was stood down to the end of the reference week.

**20** *Unemployed persons classified by industry and occupation.* Unemployed persons who had worked full-time for two weeks or more in the last two years are classified according to the industry and occupation of their most recent full-time job.

**21** *Industry classification.* From August 1994, LFS industry data have been classified according to the *Australian and New Zealand Standard Industrial Classification (ANZSIC), 1993* (Cat. no. 1292.0).

**22** *Occupation classification.* From August 1996, occupation data have been classified according to the *Australian Standard Classification of Occupations (ASCO), Second Edition* (Cat. no. 1220.0).

**23** *Marital status.* In the LFS, persons are classified as married or not married. Persons are classified as married if they are reported as being married (including de facto) and their spouse was a usual resident of the household at the time of the survey.



DEFINITIONS *continued*

**24** *Persons attending school or a tertiary educational institution.*

Persons attending school comprise those aged 15–19 years who, during the reference week, were enrolled full-time at secondary or high schools. Persons attending a tertiary educational institution comprise those aged 15–24 years who were enrolled full-time at universities, other institutions of higher education, TAFE colleges and theological colleges.

**25** *Employment/population ratio.* For any group, the number of employed persons expressed as a percentage of the civilian population aged 15 years and over in the same group.

STATISTICAL AREAS

**26** The regional structure for NSW used in tables 16–19 is based on the Statistical Region structure of the *Australian Standard Geographical Classification (ASGC)* (Cat. no. 1216.0).

**27** Changes were made to labour force regions in NSW from September 1997. Blacktown–Baulkham Hills SR was split up with Blacktown being merged with Outer Western Sydney SR to form Outer Western Sydney SR and Blacktown (C) and Baulkham Hills being merged with Hornsby–Ku-ring-gai SR to form Hornsby–Ku-ring-gai SR and Baulkham Hills (A). In addition, Northern, Far West–North Western and Central West SRs now include the Far West Statistical Division, previously excluded. This has resulted in a series break in the data for this area.

**28** For further details, see *Information Paper: Regional Labour Force Statistics, September 1997* (Cat. no. 6262.0).

SEASONAL ADJUSTMENT  
AND TREND ESTIMATION

**29** Seasonal adjustment is a means of removing the estimated effects of normal seasonal variation from the series so that the effects of other influences on the series can be more clearly recognised.

**30** Smoothing seasonally adjusted series produces a measure of the underlying trend by reducing the impact of the irregular component of the series. The trend estimates are derived by applying a 13-term Henderson-weighted moving average to the respective seasonally adjusted series. While this smoothing technique enables estimates to be produced which include the latest month, it does result in revisions to the most recent months as additional observations become available.

**31** Seasonally adjusted series for NSW appear in table 2. Trend estimates for NSW and ACT appear in tables 2 and 21 respectively. Seasonally adjusted data is not available for the ACT.

RELIABILITY OF THE  
ESTIMATES

**32** Estimates are subject to sampling and non-sampling errors. See the Technical note on pages 58–60 for more information.

## RELATED PUBLICATIONS

**33** Users may also wish to refer to the following related publications which are available from ABS Bookshops:

- *Australian Capital Territory at a Glance*, Cat. no. 1314.8, issued annually.
- *Australian Capital Territory Business Indicators*, Cat. no. 1303.8, issued monthly.
- *Australian Capital Territory Statistical Summary*, Cat. no. 1307.8, issued annually.
- *Information Paper: Labour Force Survey—Sample Design*, Cat. no. 6269.0.
- *Information Paper: Regional Labour Force Statistics, September 1997*, Cat. no. 6262.0
- *Labour Force, Australia, Preliminary*, Cat. no. 6202.0, issued monthly.
- *Labour Force, Australia*, Cat. no. 6203.0, issued monthly.

## ADDITIONAL DATA

**34** The ABS can also make available information which is not published. In general, a charge is made for providing unpublished information.

## ROUNDING

**35** Figures have been rounded and discrepancies may occur between sums of the component items and the totals shown.

## APPENDIX

### SUPPLEMENTARY TOPICS

Although emphasis in the population survey is placed on the regular collection of data on demographic and labour force characteristics, supplementary and special surveys of particular aspects of the labour force are carried out from time to time.

It was ABS practice to release statistics from supplementary and special surveys in *Labour Force, Australia* (Cat. no. 6203.0). This practice ceased with the release of the February 1996 issue of *Labour Force, Australia*. For future releases of supplementary labour data, separate publications containing summary results and key findings will be produced.

Equivalent tables at the State level are available on microfiche. In addition, other unpublished data can be provided to meet special requirements.

CATALOGUE/ PRODUCT NO.	TITLE OF PUBLICATION/STANDARD DATA SERVICE	PRICE(a) \$
6206.0	Labour Force Experience, Australia, February 1997	18.50
6209.0	Labour Mobility, Australia, February 1998	18.50
6216.0	Multiple Jobholding, Australia, August 1997	18.50
6220.0	Persons not in the Labour Force, Australia, September 1998	19.00
6222.0	Job Search Experience of Unemployed Persons, Australia, July 1998	18.50
6224.0	Labour Force Status and Other Characteristics of Families, Australia, June 1998	19.00
6227.0	Transition from Education to Work, Australia, May 1998	19.00
6238.0	Retirement and Retirement Intentions, Australia, November 1997	21.00
6245.0	Successful and Unsuccessful Job Search Experience, Australia, July 1998	18.50
6247.1	Part-time, Casual and Temporary Employment, NSW, October 1997	16.00
6250.0	Labour Force Status and Other Characteristics of Migrants, Australia, November 1996	15.50
6254.0	Career Experience, Australia, November 1996	16.00
6265.0	Underemployed Workers, Australia, September 1997	19.00
6266.0	Retrenchment and Redundancy, Australia, July 1997	21.00
6272.0	Participation in Education, Australia, September 1998	18.50
6275.0	Persons Employed at Home, Australia, September 1995	14.50
6286.0	Australians' Employment and Unemployment Patterns, 1994–1996	25.00
6310.0	Employee Earnings, Benefits and Trade Union Membership, Australia, August 1998	21.00
6342.0	Working Arrangements, Australia, August 1997	19.00

(a) Prices quoted are subject to revision

MAJOR STATISTICAL REGION	STATISTICAL REGION/ STATISTICAL REGION SECTOR	STATISTICAL LOCAL AREA
SYDNEY	Inner Sydney and Inner Western Sydney (SRs)	Ashfield (A)
		Botany (A)
		Burwood (A)
		Concord (A)
		Drummoyne (A)
		Leichhardt (A)
		Marrickville (A)
		South Sydney (C)
		Strathfield (A)
		Sydney (C)—Inner Sydney (C)—Remainder
	Inner Sydney (SR)	Botany (A)
		Leichhardt (A)
		Marrickville (A)
		South Sydney (C)
		Sydney (C)—Inner Sydney (C)—Remainder
	Eastern Suburbs (SR)	Randwick (C)
		Waverley (A)
		Woollahra (A)
	St George–Sutherland (SR)	Hurstville (C)
		Kogarah (A)
		Rockdale (A)
		Sutherland Shire (A)
	Canterbury–Bankstown (SR)	Bankstown (C)
		Canterbury (A)
	Fairfield–Liverpool and Outer South Western Sydney (SRs)	Camden (A)
		Campbelltown (C)
		Fairfield (C)
		Liverpool (C)
		Wollondilly (A)
	Fairfield–Liverpool (SR)	Fairfield (C)
		Liverpool (C)
	Central Western Sydney (SR)	Auburn (A)
		Holroyd (C)
		Parramatta (C)
	Outer Western Sydney (SR) and Blacktown (C)	Blacktown (C)
		Blue Mountains (C)
		Hawkesbury (C)
		Penrith (C)

MAJOR STATISTICAL REGION	STATISTICAL REGION/ STATISTICAL REGION SECTOR	STATISTICAL LOCAL AREA
SYDNEY <i>continued</i>	Lower Northern Sydney (SR)	Hunter's Hill (A) Lane Cove (A) Mosman (A) North Sydney (A) Ryde (C) Willoughby (C)
	Hornsby–Ku-ring-gai (SR) and Baulkham Hills (A)	Baulkham Hills (A) Hornsby (A) Ku-ring-gai (A)
	Northern Beaches (SR)	Manly (A) Pittwater (A) Warringah (A)
	Gosford–Wyong (SR)	Gosford (C) Wyong (A)
BALANCE OF NSW (b)	Hunter (SR)	Cessnock (C) Dungog (A) Gloucester (A) Great Lakes (A) Lake Macquarie (C) Maitland (C) Merriwa (A) Murrurundi (A) Muswellbrook (A) Newcastle (C)—Inner Newcastle (C)—Remainder Port Stephens (A) Scone (A) Singleton (A)
	Newcastle (SRS)	Cessnock (C) Lake Macquarie (C) Maitland (C) Newcastle (C)—Inner Newcastle (C)—Remainder Port Stephens (A)

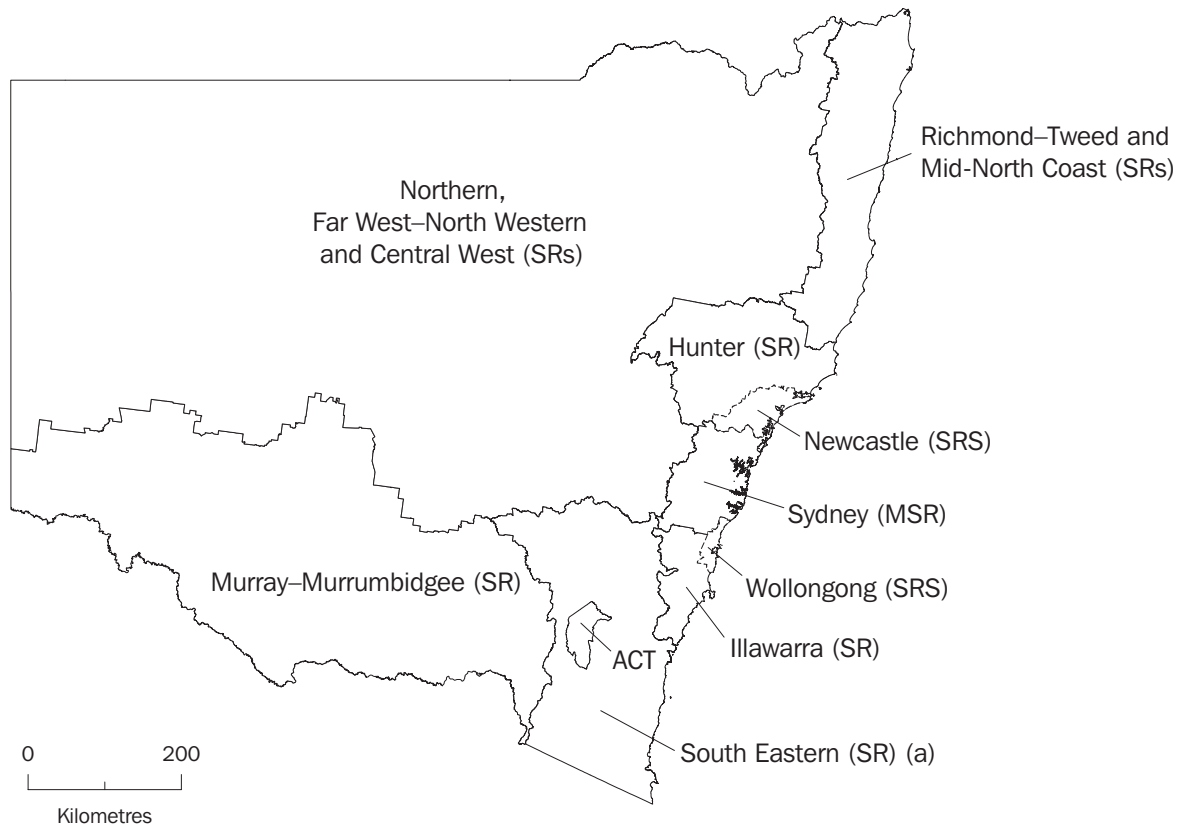
MAJOR STATISTICAL REGION	STATISTICAL REGION/ STATISTICAL REGION SECTOR	STATISTICAL LOCAL AREA
BALANCE OF NSW <i>continued</i>	Illawarra and South Eastern (SRs)	Bega Valley (A)
		Bombala (A)
		Boorowa (A)
Cooma–Monaro (A)		
Crookwell (A)		
Eurobodalla (A)		
Goulburn (C)		
Gunning (A)		
Harden (A)		
Kiama (A)		
Mulwaree (A)		
Queanbeyan (C)		
Shellharbour (A)		
Shoalhaven (C)		
Snowy River (A)		
Tallaganda (A)		
Wingecarribee (A)		
Wollongong (C)		
Yarrowlumla (A)— Part A		
Yarrowlumla (A)—Part B		
Yass (A)		
Young (A)		
	Illawarra (SR)	Kiama (A)
		Shellharbour (A)
		Shoalhaven (C)
		Wingecarribee (A)
		Wollongong (C)
	Richmond–Tweed and Mid-North Coast (SRs)	Ballina (A)
		Bellingen (A)
		Byron (A)
		Casino (A)
		Coffs Harbour (C)
		Copmanhurst (A)
		Grafton (C)
		Greater Taree (C)
		Hastings (A)
		Kempsey (A)
		Kyogle (A)
		Lismore (C)
		Lord Howe Island
		Macleay (A)
		Nambucca (A)
		Nymboida (A)
		Richmond River (A)
		Tweed (A)—Part A
	Tweed (A)—Part B	
	Ulmarra (A)	

MAJOR STATISTICAL REGION	STATISTICAL REGION/ STATISTICAL REGION SECTOR	STATISTICAL LOCAL AREA
BALANCE OF NSW <i>continued</i>	Northern, Far West–North Western and Central West (SRs)	Armidale (C) Barraba (A) Bathurst (C) Bingara (A) Bland (A) Blayney (A)—Part A Blayney (A)—Part B Bogan (A) Bourke (A) Brewarrina (A) Broken Hill (C) Central Darling (A) Cabonne (A)—Part A Cabonne (A)—Part B Cabonne (A)—Part C Cobar (A) Coolah (A) Coonabarabran (A) Coonamble (A) Cowra (A) Dubbo (C) Dumaresq (A) Evans (A)—Part A Evans (A)—Part B Forbes (A) Gilgandra (A) Glen Innes (A) Greater Lithgow (C) Gunnedah (A) Guyra (A) Inverell (A)—Part A Inverell (A)—Part B Lachlan (A) Manilla (A) Moree Plains (A) Mudgee (A) Narrabri (A) Narromine (A) Nundle (A) Oberon (A) Orange (C) Parkes (A) Parry (A) Quirindi (A) Rylstone (A) Severn (A) Tamworth (C) Tenterfield (A) Unincorporated Far West Uralla (A) Walcha (A) Walgett (A) Warren (A) Weddin (A) Wellington (A) Yallaroi (A)

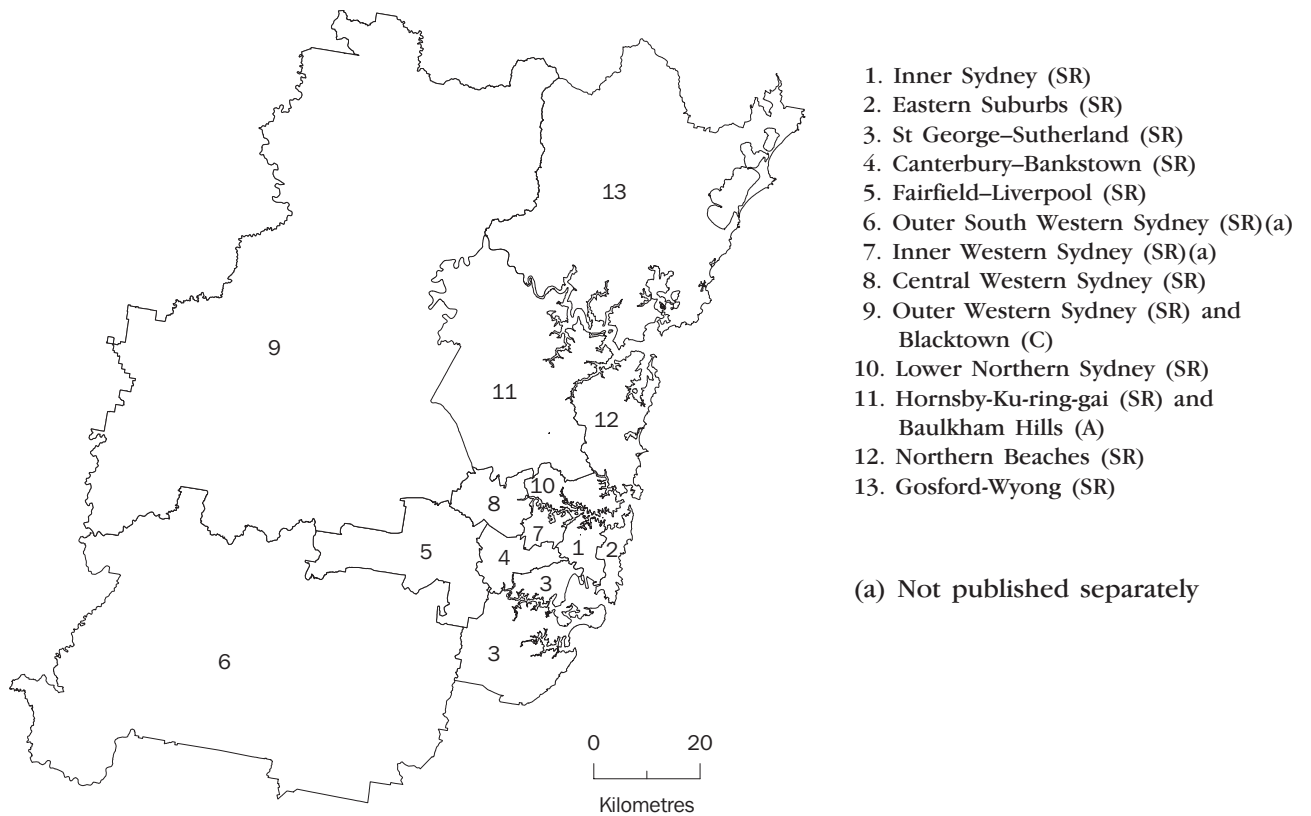
MAJOR STATISTICAL REGION	STATISTICAL REGION/ STATISTICAL REGION SECTOR	STATISTICAL LOCAL AREA
BALANCE OF NSW <i>continued</i>	Murray–Murrumbidgee (SR)	Albury (C) Balranald (A) Berrigan (A) Carrathool (A) Conargo (A) Coolamon (A) Cootamundra (A) Corowa (A) Culcairn (A) Deniliquin (A) Griffith (C) Gundagai (A) Hay (A) Holbrook (A) Hume (A) Jerilderie (A) Junee (A) Leeton (A) Lockhart (A) Murray (A) Murrumbidgee (A) Narrandera (A) Temora (A) Tumbarumba (A) Tumut (A) Urana (A) Wagga Wagga (C) Wakool (A) Wentworth (A) Windouran (A)
NOT APPLICABLE	Australian Capital Territory and South Eastern (SRs)	Australian Capital Territory Bega Valley (A) Bombala (A) Boorowa (A) Cooma–Monaro (A) Crookwell (A) Eurobodalla (A) Goulburn (C) Gunning (A) Harden (A) Mulwaree (A) Queanbeyan (C) Snowy River (A) Tallaganda (A) Yarrowlumla (A)—Part A Yarrowlumla (A)—Part B Yass (A) Young (A)



REGIONS OF NSW AND ACT



REGIONS OF SYDNEY (MSR)



## TECHNICAL NOTE: DATA RELIABILITY

### SOURCES OF ERROR

There are a number of possible sources of error in sample surveys and these can be classified into two types: sampling error; and non-sampling error.

### NON-SAMPLING ERRORS

Non-sampling errors may arise as a result of errors in the reporting, recording or processing of the data and can occur even if there is a complete enumeration of the population. Non-sampling errors can be introduced through: inadequacies in the questionnaire; non-response; inaccurate reporting by respondents; errors in the application of survey procedures; incorrect recording of answers; and errors in data entry and processing.

It is difficult to measure the size of the non-sampling errors and the extent of these errors could vary considerably in significance from survey to survey, and from question to question. However, every effort is made in the design of the survey and development of survey procedures to minimise the effect of these errors.

### SAMPLING ERRORS

Sampling error is the error which occurs by chance because the data were only obtained from a sample, not the entire population.

#### Standard errors of estimates

One measure of the variability of estimates which occurs as a result of surveying only a sample of the population is the standard error (SE). There are about two chances in three that a survey estimate is within one standard error of the figure that would have been obtained if all persons had been included and about 19 chances in 20 that it is within two standard errors. That is, there are 19 chances in 20 that the true estimate is in the range:

$$X - 2 \times SE(X) \text{ to } X + 2 \times SE(X)$$

(where  $X$  is the estimate)

The standard error of an estimate can be obtained from the tables on pages 61–63. Linear interpolation should be used to calculate the standard error of estimates falling between the sizes of estimates listed in the table (see example on page 60).

In the tables in this publication, only estimates with relative standard errors of 25% or less, and percentages based on such estimates, are considered sufficiently reliable for most purposes. However, estimates and percentages with larger relative standard errors have been included and are preceded by an asterisk (e.g. \*3.4) to indicate they are subject to high standard errors and should be used with caution.

Standard errors of estimates *continued* The standard error can also be expressed as a percentage of the estimate and this is known as the relative standard error (RSE). The RSE is determined by dividing the standard error of an estimate SE(X) by the estimate X and expressing it as a percentage. That is:

$$RSE(X) = \frac{SE(X) \times 100}{X}$$

(where X is the estimate)

The look up list on the following page provides a guide for the calculation of standard errors and relative standard errors for a range of statistics.

#### CALCULATING STANDARD ERRORS

The methods described below refer to the calculation of standard errors for NSW estimates. Standard errors of ACT estimates should be calculated from the table on page 63.

MEASURE OF RELIABILITY TO BE DETERMINED	METHOD
Standard errors of estimates of employed persons.	Determine the SE from the table on page 61 directly.
Standard errors of estimates of unemployed persons.	Multiply the SE from the table on page 61 by 1.06.
Standard errors of estimates of persons not in the labour force.	Multiply the SE from the table on page 61 by 1.1.
Standard errors of rates (e.g. the unemployment rate which is based on the number of unemployed persons expressed as a percentage of the number of persons in the labour force).	Determine the RSE of the numerator (X) and the denominator (Y) then apply the following formula: $RSE\left(\frac{X}{Y}\right) = \sqrt{[RSE(X)]^2 - [RSE(Y)]^2}$
Standard error of average duration of unemployment.	Determine the RSE for the number of persons on which the average is based and multiply this by 1.3.
Standard error of median duration of unemployment.	Determine the RSE for the number of persons on which the average is based and multiply this by 2.0.
Standard error of monthly movements.	From the table on page 62, look up the SE of the larger estimate.
Standard error of quarterly movements.	Determine the standard error of the larger estimate from the table on page 61 and multiply this by 1.11.
Standard error of annual movements.	Determine the standard error of the larger estimate from the table on page 61 and multiply this by 1.3.

## LINEAR INTERPOLATION

Linear interpolation is used to determine the standard error of an estimate which falls between two values listed in the size of estimate column in the tables on page 61 or 63. Linear interpolation is best described using an example. In November 1999, there were 709,700 ( $X_e$ ) employed persons working part-time in NSW. This estimate falls between the values 500,000 ( $X_l$ ) and 1,000,000 ( $X_u$ ) in the table on page 61.

The standard error of the estimate is determined as follows. Firstly calculate

$$\begin{aligned} F &= \frac{X_e - X_l}{X_u - X_l} \\ &= \frac{709,700 - 500,000}{1,000,000 - 500,000} \\ &= 0.42 \end{aligned}$$

Secondly, calculate the standard error of the estimate,  $SE(X_e)$  thus:

$$\begin{aligned} SE(X_e) &= SE(X_l) + (F \times [SE(X_u) - SE(X_l)]) \\ &= 8,350 + (0.42 \times [11,650 - 8,350]) \\ &= 9,736 \end{aligned}$$

Therefore the standard error of the number of employed persons working part-time in NSW in November 1999 is 9,736.

**STANDARD ERRORS**
**LEVEL OF ESTIMATES(a), NSW**
**REGIONS IN SYDNEY (MSR)**

<i>Size of estimate</i>	<i>NSW</i>	<i>Sydney (MSR)</i>	<i>Balance of NSW (MSR)</i>	<i>Inner Sydney and Inner Western Sydney (SRs)</i>	<i>Inner Sydney (SR)</i>	<i>Eastern Suburbs (SR)</i>	<i>St George-Sutherland</i>	<i>Canterbury-Bankstown (SR)</i>	<i>Fairfield-Liverpool and Outer South Western Sydney (SRs)</i>	<i>Fairfield-Liverpool (SR)</i>
500	320	440	400	310	290	240	200	260	310	300
1 000	520	630	640	460	440	360	310	390	460	450
3 000	1 000	1 060	1 060	880	830	680	590	740	880	850
5 000	1 350	1 340	1 340	1 180	1 110	910	790	990	1 180	1 140
10 000	1 900	1 820	1 810	1 740	1 630	1 340	1 160	1 460	1 730	1 680
20 000	2 600	2 440	2 420	2 540	2 380	1 960	1 700	2 130	2 530	2 450
50 000	3 700	3 500	3 520	4 130	3 880	3 190	2 760	3 470	4 120	3 990
100 000	4 600	4 500	4 600	5 900	5 600	4 600	4 000	5 000	5 900	5 700
200 000	5 750	5 800	6 000	8 400	7 900	6 500	5 600	7 100	8 400	8 100
300 000	6 700	6 700	6 900	10 300	9 600	7 900	6 900	8 600	10 200	9 900
500 000	8 350	7 900	8 300	13 200	12 400	10 200	8 800	11 100	13 100	12 700
1 000 000	11 650	9 800	10 600	—	—	—	—	—	—	—
2 000 000	17 150	12 000	13 300	—	—	—	—	—	—	—
5 000 000	30 750	15 300	17 700	—	—	—	—	—	—	—

**REGIONS IN SYDNEY (MSR)—continued**

<i>Size of estimates</i>	<i>Central Western Sydney (SR)</i>	<i>Outer Western Sydney (SR) and Blacktown (C)</i>	<i>Lower Northern Sydney (SR)</i>	<i>Hornsby-Ku-ring-gai (SR) and Baulkham Hills (A)</i>	<i>Northern Beaches</i>	<i>Gosford Wyong (SR)</i>
500	230	260	270	260	260	230
1 000	340	400	410	390	400	350
3 000	650	760	770	750	760	670
5 000	870	1 010	1 030	1 000	1 010	890
10 000	1 290	1 490	1 520	1 480	1 490	1 310
20 000	1 880	2 180	2 220	2 150	2 170	1 920
50 000	3 060	3 550	3 620	3 510	3 540	3 120
100 000	4 400	5 100	5 200	5 000	5 100	4 500
200 000	6 200	7 200	7 300	7 100	7 200	6 400
300 000	7 600	8 800	9 000	8 700	8 800	7 800

**REGIONS IN BALANCE OF NSW (MSR)**

<i>Size of estimates</i>	<i>Hunter (SR)</i>	<i>Newcastle (SRS)</i>	<i>Illawarra and South Eastern (SRS)</i>	<i>Illawarra (SR)</i>	<i>Wollongong (SRS)</i>	<i>Richmond-Tweed and Mid North Coast (SRs)</i>	<i>Northern, Far West and North Western and Central West (SRs)</i>	<i>Murray-Murrumbidgee (SR)</i>
500	300	280	310	290	240	340	330	340
1 000	450	420	470	440	360	510	500	520
3 000	850	810	900	830	680	970	940	990
5 000	1 140	1 080	1 200	1 110	910	1 300	1 260	1 320
10 000	1 680	1 590	1 770	1 630	1 340	1 920	1 860	1 950
20 000	2 450	2 320	2 580	2 390	1 950	2 800	2 720	2 850
50 000	4 000	3 780	4 210	3 890	3 180	4 560	4 430	4 640
100 000	5 700	5 400	6 000	5 600	4 600	6 500	6 300	6 600
200 000	8 100	7 700	8 600	7 900	6 500	9 300	9 000	9 400
300 000	9 900	9 400	10 500	9 700	7 900	11 300	11 000	11 500

(a) Standard errors of estimates from September 1997. For standard errors for earlier periods, see previous issues of this publication.

**STANDARD ERRORS**
**MOVEMENT ESTIMATES(a), NSW**
**REGIONS IN SYDNEY (MSR)**

<i>Size of estimates</i>	NSW	Sydney (MSR)	Balance of NSW (MSR)	Inner Sydney and Inner Western Sydney (SRs)	Inner Sydney (SR)	Eastern Suburbs (SR)	St George-Sutherland (SR)	Canterbury-Bankstown (SR)	Western Sydney (SRs)	Fairfield Liverpool and Outer South Fairfield-Liverpool (SR)
500	580	600	580	310	280	210	200	250	270	240
1 000	730	750	720	420	380	290	270	340	370	340
3 000	1 060	1 070	1 030	700	640	490	460	570	620	560
5 000	1 260	1 270	1 220	890	810	620	580	720	790	710
10 000	1 590	1 600	1 500	1 250	1 100	850	800	1 000	1 100	1 000
20 000	2 010	2 000	1 900	1 700	1 550	1 200	1 100	1 350	1 500	1 350
50 000	2 740	2 700	2 550	2 600	2 350	1 800	1 700	2 100	2 300	2 100
100 000	3 460	350	3 200	3 600	3 250	2 500	2 300	2 900	3 150	2 850
200 000	4 370	4 200	4 000	4 950	4 450	3 450	3 200	4 000	4 400	3 950
300 000	5 000	4 800	4 600	5 950	5 400	4 150	3 850	4 800	5 300	4 750
500 000	5 950	5 700	5 400	7 550	6 850	5 250	4 900	6 100	6 700	6 050
1 000 000	7 510	7 100	6 800	—	—	—	—	—	—	—
2 000 000	9 490	8 900	8 500	—	—	—	—	—	—	—
5 000 000	12 920	12 000	11 400	—	—	—	—	—	—	—

**REGIONS IN SYDNEY (MSR)—continued**

<i>Size of estimate</i>	Central Western Sydney (SR)	Outer Western Sydney (SR) and Blacktown (C)	Lower Northern Sydney (SR)	Hornsby-Ku-ring-gai (SR) and Baulkham Hills (A)	Northern Beaches (SR)	Gosford Wyong(SR)
500	210	280	250	180	220	220
1 000	290	390	340	250	300	310
3 000	480	650	570	420	500	520
5 000	600	820	720	540	630	650
10 000	850	1 150	1 000	750	850	900
20 000	1 150	1 550	1 400	1 000	1 200	1 250
50 000	1 750	2 400	2 100	1 550	1 850	1 900
100 000	2 450	3 300	2 900	2 150	2 500	2 650
200 000	3 350	4 550	4 000	3 000	3 500	3 650
300 000	4 050	5 500	4 850	3 600	4 200	4 400

**REGIONS IN BALANCE OF NSW (MSR)**

<i>Size of estimate</i>	Hunter (SR)	Newcastle (SRS)	Illawarra and South Eastern (SRS)	Illawarra (SR)	Wollongong (SRS)	Richmond-Tweed and Mid North Coast (SRs)	Northern, Far West North Western and Central West (SRs)	Murray-Murrumbidgee (SR)
500	290	270	300	260	220	320	310	280
1 000	400	370	410	360	300	440	430	390
3 000	660	620	690	600	500	740	720	650
5 000	840	780	870	760	630	930	910	830
10 000	1 150	1 100	1 200	1 050	850	1 300	1 250	1 150
20 000	1 600	1 500	1 650	1 450	1 200	1 800	1 750	1 600
50 000	2 450	2 300	2 550	2 200	1 850	2 700	2 650	2 400
100 000	3 400	3 150	3 500	3 050	2 550	3 750	3 650	3 350
200 000	4 650	4 350	4 800	4 200	3 500	5 200	5 050	4 600
300 000	5 650	5 250	5 800	5 100	4 250	6 250	6 100	5 550

(a) Standard errors of month to month movements from October 1997–November 1999 onwards. For standard errors for earlier periods, see previous issues of this publication.

## STANDARD ERRORS

### STANDARD ERRORS, LEVEL ESTIMATES(a)—NSW AND ACT

<i>Size of estimate</i>	<i>ACT and South Eastern (SRs)</i>	<i>ACT</i>
500	280	210
1 000	390	270
3 000	620	400
5 000	770	500
10 000	1 020	600
20 000	1 340	800
50 000	1 910	1 200
100 000	2 500	1 650
200 000	3 200	2 250
300 000	3 700	2 700

(a) Standard errors of estimates from September 1997. For standard errors for earlier periods, see previous issues of this publication.

### STANDARD ERRORS, MOVEMENT ESTIMATES(a)—NSW AND ACT

<i>Size of estimate</i>	<i>ACT and South Eastern (SRs)</i>	<i>ACT</i>
500	220	170
1 000	280	210
3 000	420	310
5 000	510	360
10 000	650	450
20 000	850	570
50 000	1 200	760
100 000	1 550	960
200 000	2 000	1 200
300 000	2 300	1 370

(a) Standard errors of month to month movements from October 1997–November 1999 onwards. For standard errors for earlier periods, see previous issues of this publication.

## FOR MORE INFORMATION...

- INTERNET** [www.abs.gov.au](http://www.abs.gov.au) the ABS web site is the best place to start for access to summary data from our latest publications, information about the ABS, advice about upcoming releases, our catalogue, and Australia Now—a statistical profile.
- LIBRARY** A range of ABS publications is available from public and tertiary libraries Australia-wide. Contact your nearest library to determine whether it has the ABS statistics you require, or visit our web site for a list of libraries.
- CPI INFOLINE** For current and historical Consumer Price Index data, call 1902 981 074 (call cost 75c per minute).
- DIAL-A-STATISTIC** For the latest figures for National Accounts, Balance of Payments, Labour Force, Average Weekly Earnings, Estimated Resident Population and the Consumer Price Index call 1900 986 400 (call cost 75c per minute).

### INFORMATION SERVICE

Data which have been published and can be provided within five minutes are free of charge. Our information consultants can also help you to access the full range of ABS information—ABS user pays services can be tailored to your needs, time frame and budget. Publications may be purchased. Specialists are on hand to help you with analytical or methodological advice.

- PHONE** **1300 135 070**
- EMAIL** **[client.services@abs.gov.au](mailto:client.services@abs.gov.au)**
- FAX** 1300 135 211
- POST** Client Services, ABS, GPO Box 796, Sydney 1041

## WHY NOT SUBSCRIBE?

ABS subscription services provide regular, convenient and prompt deliveries of ABS publications and products as they are released. Email delivery of monthly and quarterly publications is available.

- PHONE** 1300 366 323
- EMAIL** [subscriptions@abs.gov.au](mailto:subscriptions@abs.gov.au)
- FAX** 03 9615 7848
- POST** Subscription Services, ABS, GPO Box 2796Y, Melbourne 3001



2620110002008  
ISSN 1322-0179

RRP \$21.00

© Commonwealth of Australia 2000

Produced by the Australian Bureau of Statistics